

Figure 14
The first top clip is removed by compressing the tabs and pressing the pin through the hole.

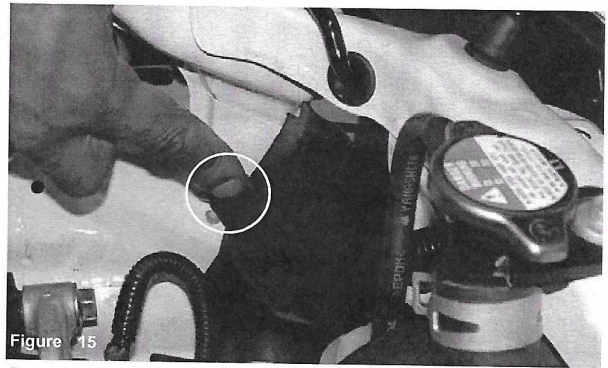


Figure 15
The second plastic clip is removed from the fender wall area.

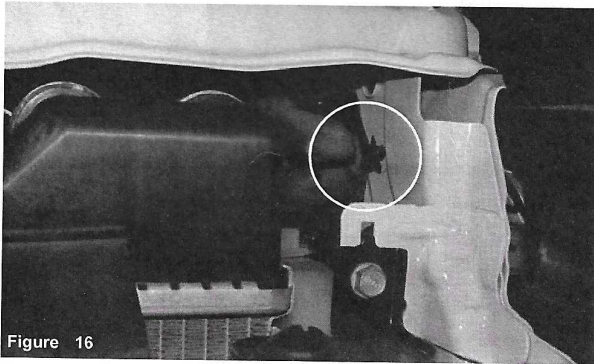


Figure 16
The inner plastic plug is removed from the main frame support.

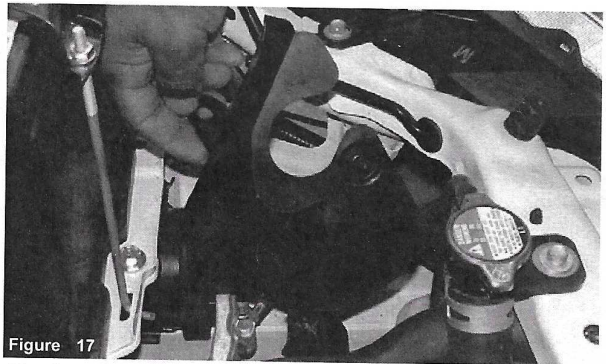


Figure 17
The plastic front cover is removed from the engine compartment.

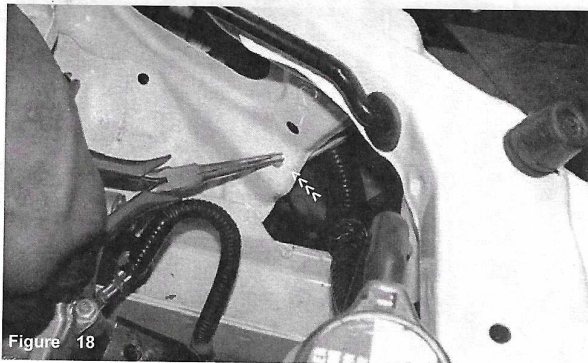


Figure 18
The harness clip is compressed and push through the fender in order to free the electrical harness.



Figure 19
The harness is pulled away from the fender until a clear path has been created for the silicone intake.



Figure 20
Insert the 1560 grommet into the pre-drilled hole located on the intake.

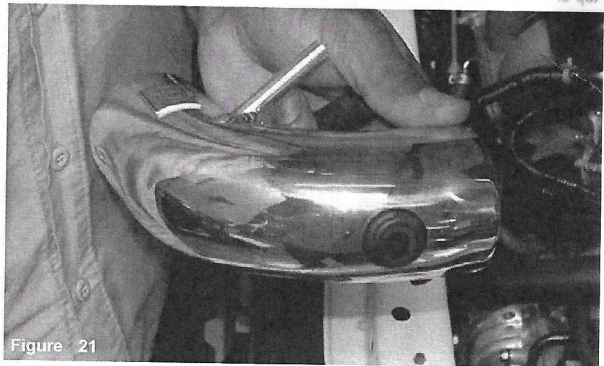


Figure 21
The sensor grommet is now sitting flush in the pre-drilled intake hole.