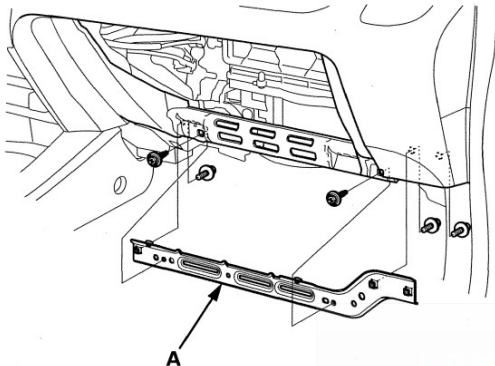
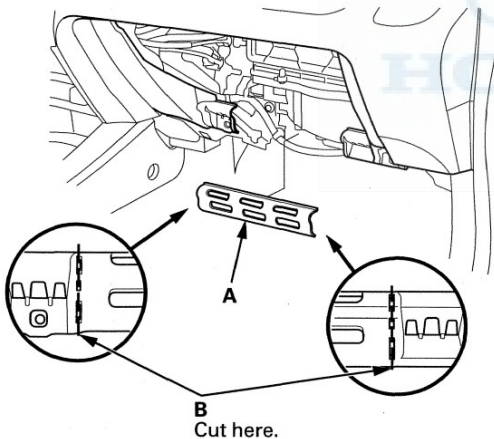


Blower Unit Removal/Installation

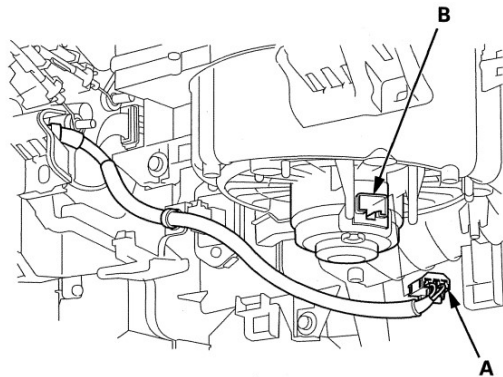
1. Remove the passenger's dashboard undercover (see page 20-101) and the glove box (see page 20-101).
2. Remove the recirculation control cable from the blower unit (see page 21-12).
3. Remove the bolts and the glove box frame (A).



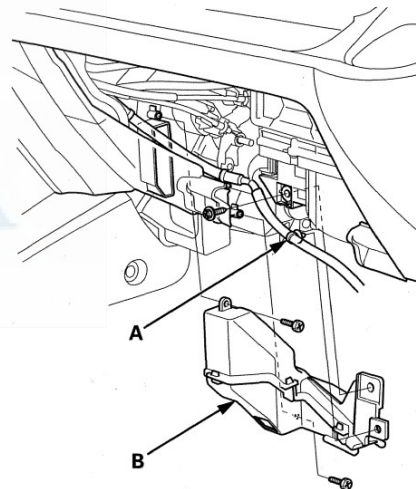
4. Cut the plastic cross brace (A) in the glove box opening with diagonal cutters in the area (B). Remove and discard the plastic cross brace.



5. Disconnect the connector (A) from the blower motor (B).



6. Remove the self-tapping screws and the harness clip (A), then remove the passenger's heater duct (B).

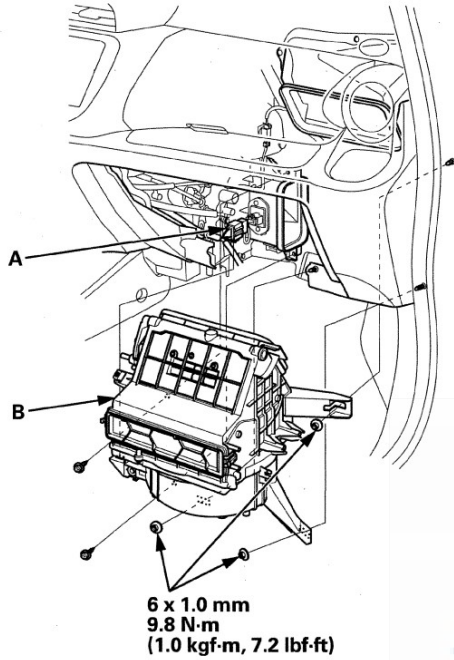


(cont'd)

Heating

Blower Unit Removal/Installation (cont'd)

7. Remove the connector clip (A), the self-tapping screws and the mounting nuts, then pull the blower unit (B) out.



8. Install the unit in the reverse order of removal. Make sure that there is no air leakage.

Blower Unit Component Replacement

Note these items when overhauling the blower unit:

- The blower motor (A) and the dust and pollen filter (B) can be placed without removing the blower unit.
- Before reassembly, make sure that the recirculation control linkage and door move smoothly.

