

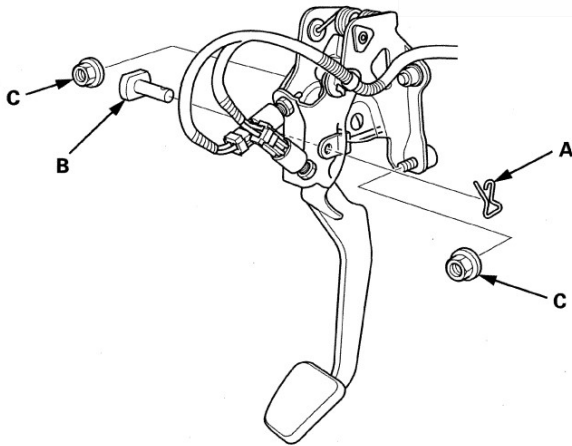
Clutch

Clutch Master Cylinder Replacement

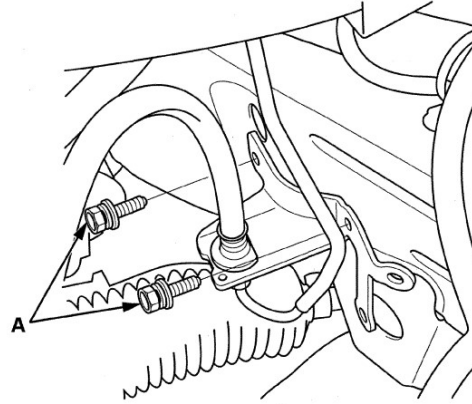
NOTE:

- Use fender covers to avoid damaging painted surfaces.
- Do not spill brake fluid on the vehicle; it may damage the paint or plastic. If brake fluid does contact the paint or plastic, wash it off immediately with water.
- Without cruise control: Clutch pedal adjusting bolt is substituted as clutch pedal position switch.
- Put on gloves to protect your hands.

1. Secure the hood in the wide open position (support rod in the lower hole).
2. Remove the wiper arms (see page 22-264).
3. Remove the cowl cover and hood hinge cover (see page 20-168).
4. Remove the wiper motor (see page 22-262).
5. Remove the under-cowl panel (see page 20-185).
6. Remove the air cleaner housing (see page 11-307).
7. Remove and discard the brake fluid from the clutch master cylinder reservoir with a syringe or other suitable device.
8. Remove the driver's dashboard lower cover (see page 20-97).
9. Pry out the lock pin (A), and pull the clevis pin (B) out of the clevis. Remove the master cylinder mounting nuts (C).



10. Remove the clutch line bracket bolts (A).

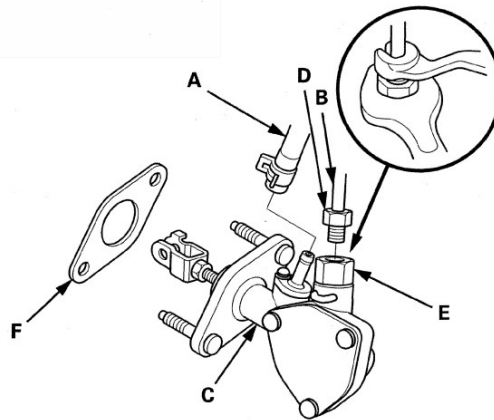


11. Remove the reservoir hose from two clips.

12. Disconnect the reservoir hose (A), then remove the clutch line (B) from the clutch master cylinder (C). Plug or wrap the end of the reservoir hose and clutch line with a shop towel to prevent brake fluid from coming out.

NOTE:

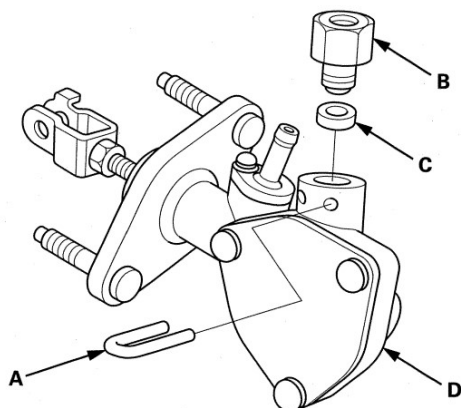
- Loosen the flare nut (D) while holding the clutch line connector (E) with a wrench.
- Inspect the hose. If the hose has damage, leaks interference, or twisting, replace it.



13. Remove the clutch master cylinder seal (F) from the clutch master cylinder.



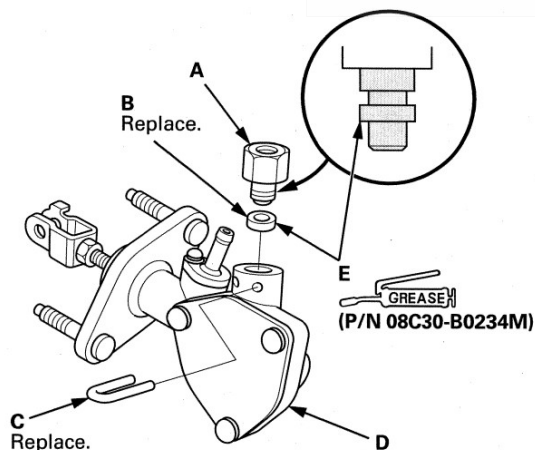
14. Remove the retaining clip (A), then remove the clutch line connector (B) and the O-ring (C) from the master cylinder (D).



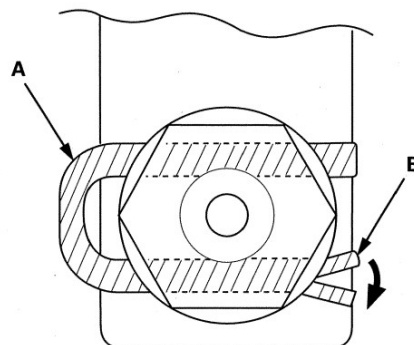
15. Install the clutch line connector (A) with a new O-ring (B), then set in a new retaining clip (C) to the master cylinder (D).

NOTE:

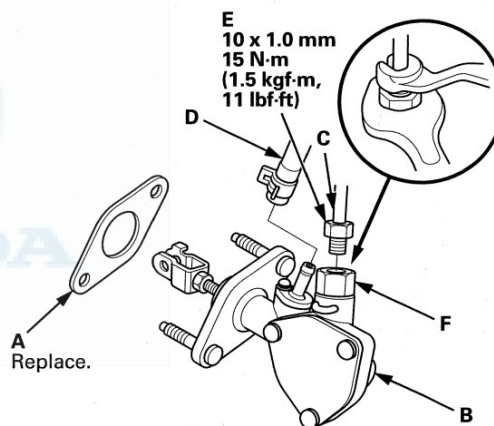
- Apply the silicone grease (P/N 08C30-B0234M) on the O-ring and the joint part (E) of the clutch line connector.
- Make sure not to get any silicone grease on the terminal part of the connectors and switches, especially if you have silicone grease on your hands or gloves.



16. To prevent the retaining clip (A) from coming off, pry apart the tip (B) of the clip with a screwdriver.



17. Install a new clutch master cylinder seal (A) to the clutch master cylinder (B).



18. Connect the clutch line (C), and reservoir hose (D).

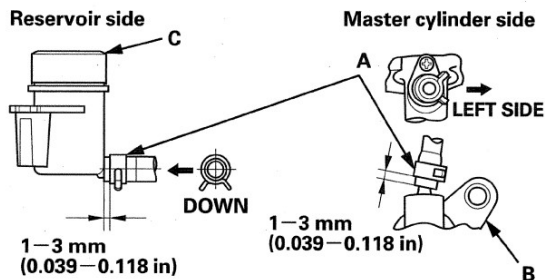
NOTE: Tighten the flare nut (E) while holding the clutch line connector (F) with a wrench.

(cont'd)

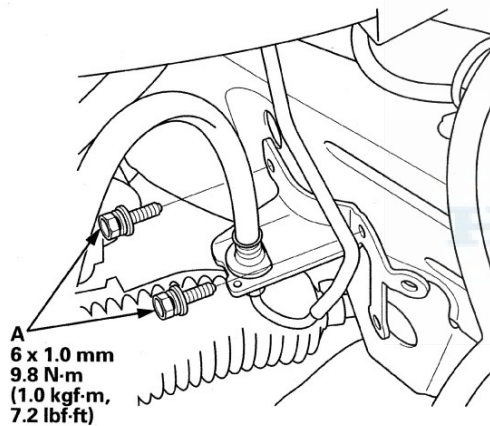
Clutch

Clutch Master Cylinder Replacement (cont'd)

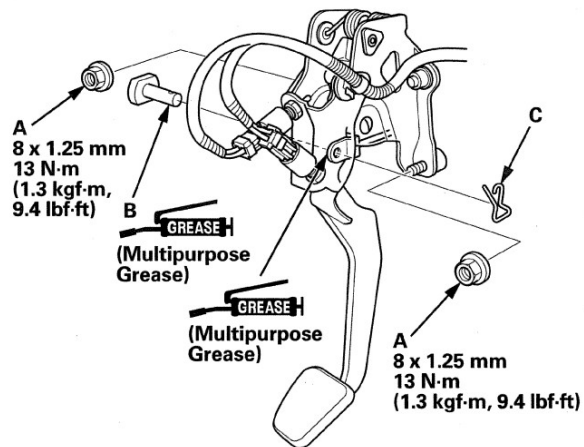
19. Make sure the hose clamps (A) are positioned on the master cylinder (B) and reservoir (C) as shown.



20. Install the two reservoir hose clips.
21. Install the clutch line bracket bolts (A).



22. Install the master cylinder mounting nuts (A).



23. Apply multipurpose grease to the clevis pin (B), and slide it into the clevis, then install a lock pin (C).
24. Adjust the clutch pedal, the clutch pedal position switch, and the clutch interlock switch (see page 12-5).
25. Bleed the clutch hydraulic system (see page 12-4).
26. Check the clutch operation, and check for leaks.
27. Install the driver's dashboard lower cover (see page 20-97).
28. Install the air cleaner housing (see page 11-307).
29. Install the under-cowl panel (see page 20-185).
30. Install the wiper motor (see page 22-262).
31. Install the cowl cover and hood hinge cover (see page 20-168).
32. Install the wiper arms (see page 22-264).
33. Test-drive the vehicle.