

## Throttle Body Removal and Installation

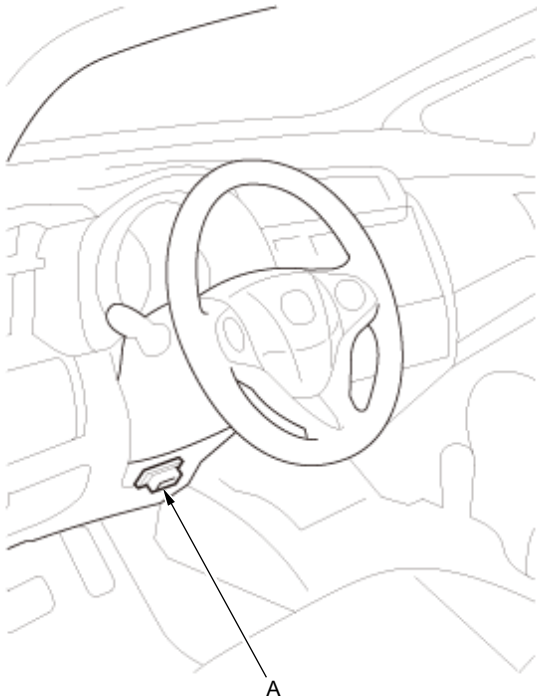
### Removal

#### **CAUTION**

Do not insert your fingers into the installed throttle body when you turn the vehicle to the ON mode, or while the vehicle is in ON mode. If you do, you will seriously injure your fingers if the throttle valve is activated.

NOTE: If you are replacing the throttle body, start at 1st procedure (HDS - Connect). If you are removing the throttle body, start at 3rd procedure (Air Cleaner - Remove).

#### 1. HDS - Connect



1. Turn the vehicle to the ON mode, but do not start the engine.
2. Connect the HDS to the DLC (A) located under the driver's side of the dashboard.
3. Make sure the HDS communicates with the PCM and other vehicle systems. If it doesn't, [go to the DLC circuit troubleshooting](#).

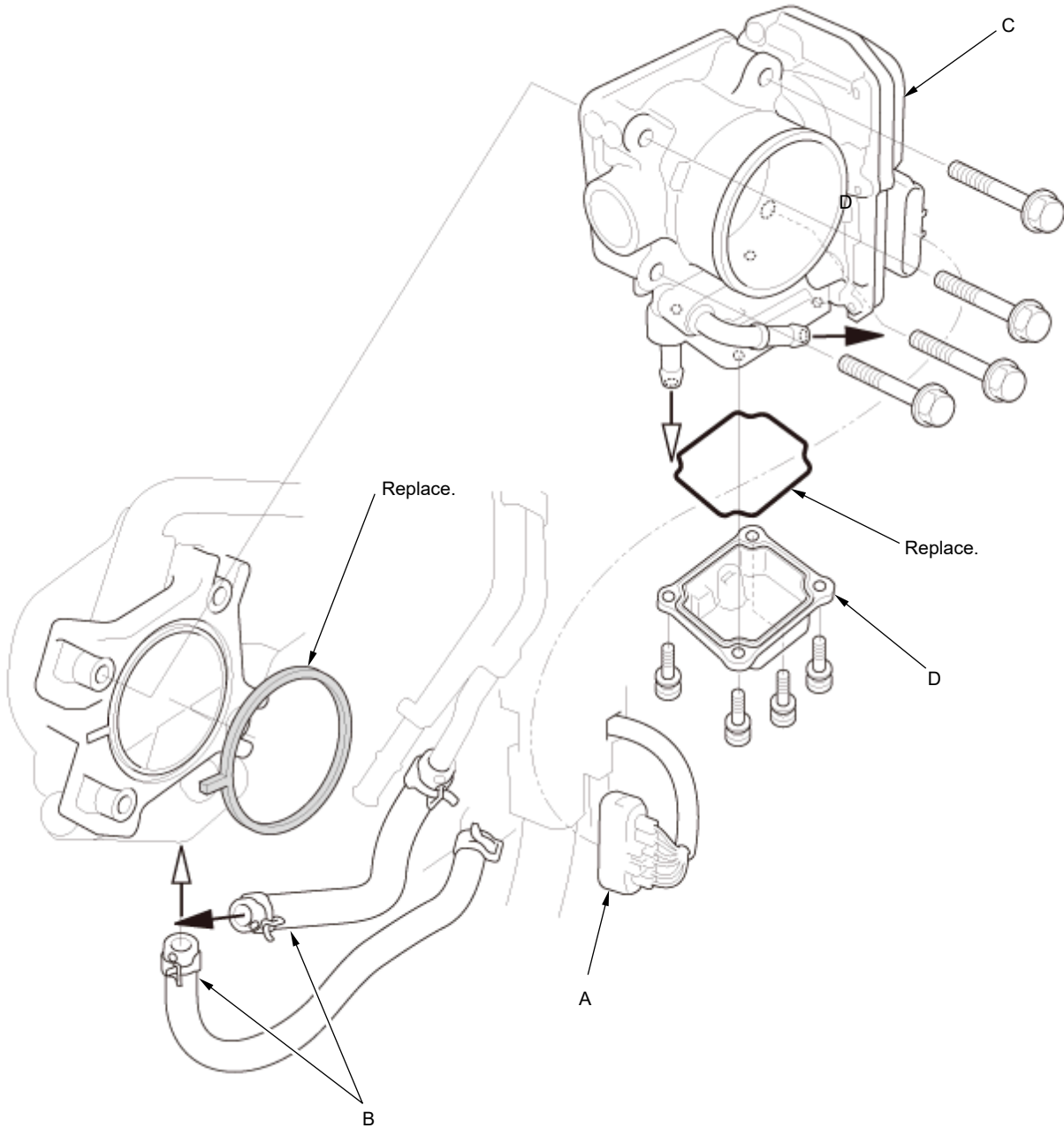
#### 2. TP POSITION CHECK - Do

1. Select the INSPECTION MENU on the HDS.
2. Do the TP POSITION CHECK in the ETCS TEST.
3. Turn the vehicle to the OFF (LOCK) mode.
4. Turn the vehicle to the ON mode, and wait 2 seconds without pressing the accelerator pedal.

#### 3. Air Cleaner - Remove

#### 4. Throttle Body - Remove

1. Disconnect the connector (A).



2. Disconnect and plug the water bypass hoses (B).

3. Remove the throttle body (C).

4. Remove the cover (D).

## Installation

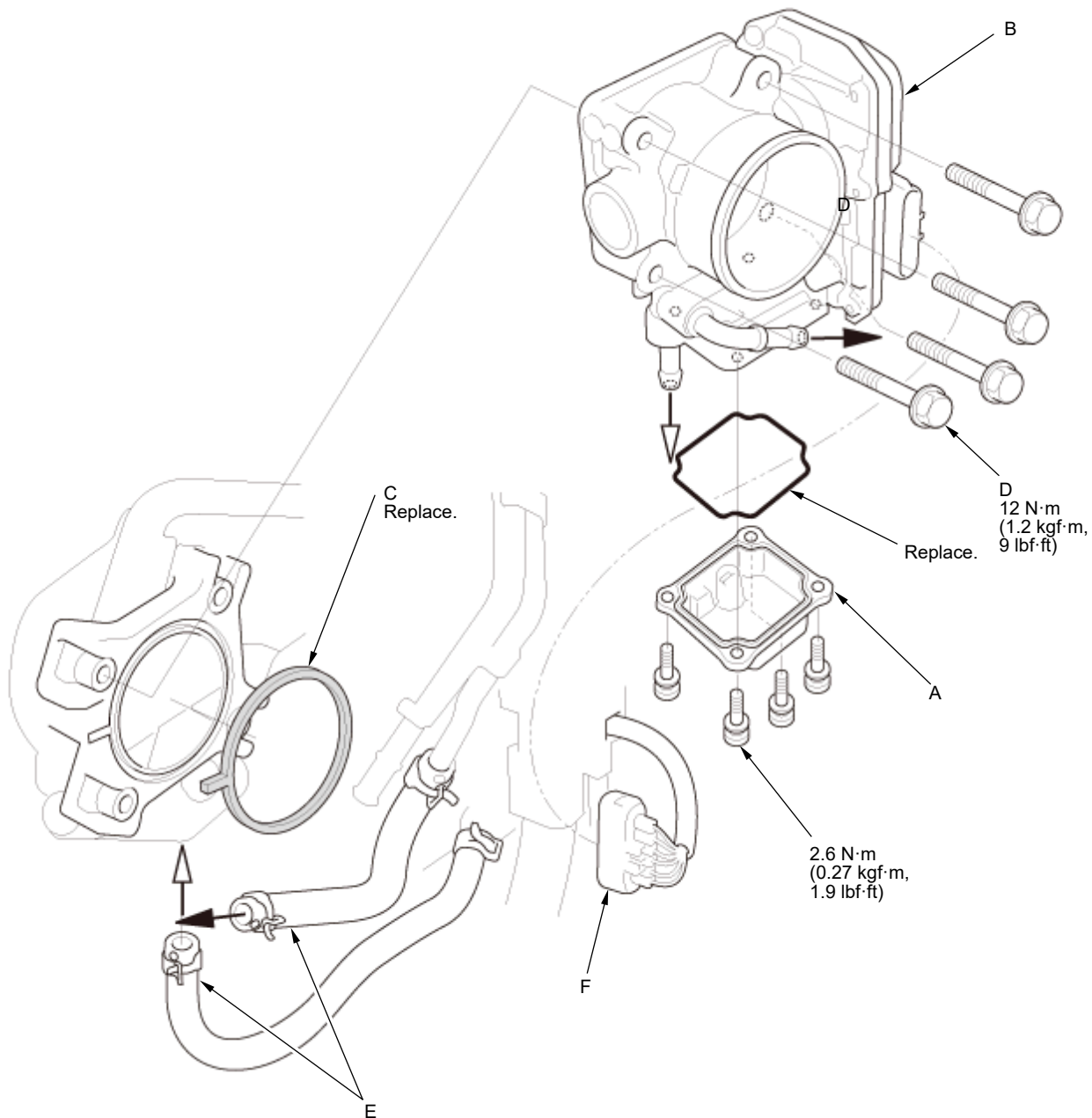
### CAUTION

Do not insert your fingers into the installed throttle body when you turn the vehicle to the ON mode, or while the vehicle is in ON mode. If you do, you will seriously injure your fingers if the throttle valve is activated.

NOTE: If you were replacing the throttle body, do the 4th to the 5th procedure (PCM - Reset to PCM - Idle Learn)

#### 1. Throttle Body - Install

1. Install the cover (A) with a new O-ring.



2. Install the throttle body (B) with a new gasket (C).
3. Tighten the bolts (D) in a cross pattern in three steps; tighten the bolts until the bolts sit on the throttle body, tighten the bolts until the gasket is compressed and both parts are contacted, tighten the bolts to specified torque.
4. Connect the water bypass hoses (E).
5. Connect the connector (F).

## **2. Air Cleaner - Install**

## **3. Engine Coolant - Refill**

## **4. PCM - Reset**

## **5. PCM - Idle Learn**