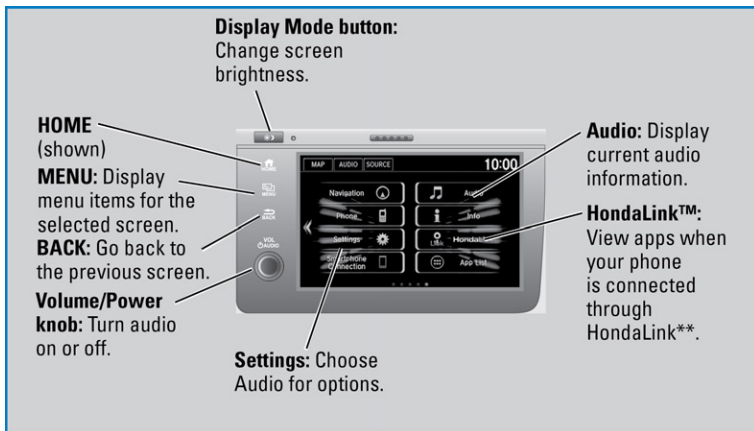


Display Audio System

Use simple gestures-including touching, swiping and scrolling-to operate certain audio functions.



Some items may be grayed out during driving to reduce the potential for distraction. You can select them when the vehicle is stopped or use voice commands.

Wearing gloves may limit or prevent touchscreen response.

HondaLink®

Models with Display Audio

Provides you with useful information about your vehicle directly from Honda.

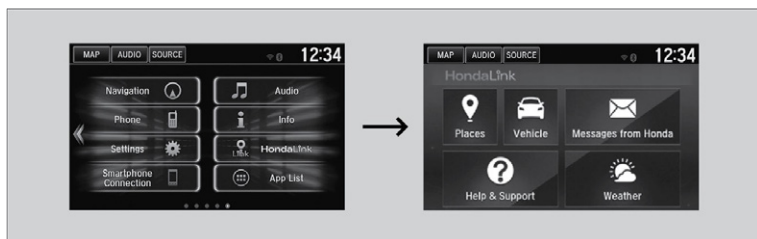
To check phone compatibility, visit handsfreelink.com (US) or handsfreelink.ca (Canada). Standard data rates may apply with your phone service provider.

To get more information on HondaLink, visit www.hondalink.com (U.S.) or honda.ca/hondalink (Canada).

■ HondaLink Menu

Select a menu option.

Places*1: Displays restaurants, gas stations, and other locations. You can send a location to the navigation system and set a route.



*1 - If equipped

Vehicle: Get instructional messages when your vehicle needs service.

Messages from Honda: Displays helpful and important information from Honda.

Help & Support: Displays tips for vehicle usage, get roadside assistance, or contact customer service.

Weather*1: Displays a weekly five-day weather forecast for any location.

■ HondaLink Connection

Follow the steps below to connect to HondaLink and use its features.

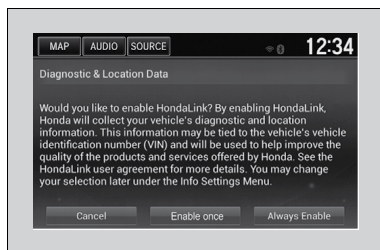
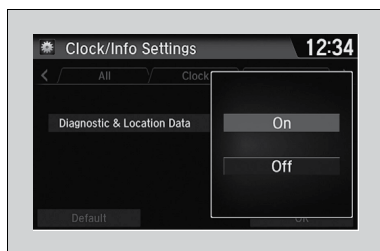
1. Select Home.
2. Select Settings.
3. Select Clock/Info.
4. Select the HondaLink tab.
5. Select Diagnostic & Location Data.
6. Select On.

You need to allow the consent of the location service to enable the HondaLink® service.

Enable once: Allows only one time.
(Prompt shows again next time.)

Always Enable: Allows anytime.
(Prompt does not show again.)

Cancel: Does not allow this consent.



HondaLink® Assist*1

If your vehicle's airbags deploy or if the unit detects that the vehicle is severely impacted, your vehicle automatically attempts to connect to an operator. Your phone must be paired to the system and have good cellular connection. Visit www.hondalink.com (U.S.) or honda.ca/hondalinkassist (Canada) for more information.

*1 - If equipped

Apple CarPlay™

Models with Display Audio

Connect an Apple CarPlay-compatible iPhone to the system. You can use the touchscreen to make a phone call, listen to music, and more. Visit the Apple CarPlay website for more information. Park in a safe place before connecting your iPhone and launching any compatible apps.



1. Connect the iPhone to the front USB port (1.5A). See USB Port.
2. Apple CarPlay requires you to send vehicle information to Honda. Select Enable Once, Always Enable, or Cancel. Your phone may prompt you to allow access for CarPlay to be launched.
3. From the HOME screen, select Apple CarPlay.
4. Select a menu option.

While connected to Apple CarPlay, calls can only be made through Apple CarPlay, not through *Bluetooth* HandsFreeLink.

Phone: Access your contacts, make phone calls, or listen to voicemail.

Music: Play music stored on your iPhone.

Maps: View a map and operate navigation. You can only use Apple CarPlay or the pre-installed navigation system to set a destination with routing guidance.

Message: View and reply to text messages, or have messages read to you aloud by the system.

Once connected, press and hold the Talk button on the steering wheel to operate the system using voice commands with Siri® Eyes Free or see Siri® Eyes Free.

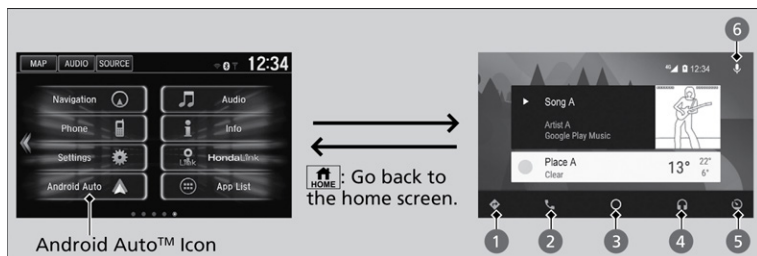
Depending on use, Apple CarPlay can share certain vehicle information (e.g., vehicle location, speed, and other operating conditions) with the connected iPhone. See Apple's privacy policy for details regarding Apple's use and handling of data uploaded by CarPlay. Use of CarPlay is at user's own risk, and is subject to agreement to the CarPlay terms of use, which are included as part of the Apple iOS terms of use. CarPlay vehicle integration is provided "as is," and Honda cannot

Android Auto™

Models with Display Audio

Connect a compatible Android phone to the system. Use the touchscreen to make a phone call, listen to music, and more. Visit the Android Auto website for more information.

Park in a safe place before connecting your Android smartphone and launching any compatible apps.



1. Download the Android Auto app to your phone.
2. Connect the phone to the front USB port (see USB Port). The phone is automatically paired. A tutorial also appears.
3. From the HOME screen, select Android Auto.
4. Android Auto requires you to send vehicle information to Honda. Select Enable Once, Always Enable, or Cancel.

NOTICE

When you first use Android Auto, a tutorial will appear on the screen. We recommend you complete this tutorial while safely parked before using Android Auto.

1. **Maps (Navigation):** View Google Maps and operate navigation. You can only use this system or the pre-installed navigation system to set a destination with routing guidance. You cannot enter destinations using the keyboard while the vehicle is moving.
2. **Phone (Communication):** Make or receive phone calls or listen to voicemail. While connected to Android Auto, calls can only be made through Android Auto, not through *Bluetooth®* HandsFreeLink®.
3. **Home (Google Now):** Display useful information organized by Android Auto into simple cards that appear only when needed.

guarantee CarPlay operability or functionality now or in the future due to, among other conditions, changes in CarPlay software/Apple iOS, service interruptions, or incompatibility or obsolescence of vehicle-integrated hardware or software. See dealer for details. Only use CarPlay when conditions allow you to do so safely. See your Owner's Manual at owners.honda.com (U.S.) or myhonda.ca (Canada) for further license and warranty terms.

AUDIO AND CONNECTIVITY


4. **Music:** Play music from compatible apps. Select this icon to switch between music apps.
5. **Return to HOME Screen:** Go back to the vehicle system HOME screen.
6. **Voice:** Use voice commands via Google Voice Search to operate Android Auto. You can also press and hold the Talk button on the steering wheel to say voice commands.

FM/AM Radio

Play FM or AM radio stations.

Depending on use, Android Auto can share certain vehicle information (e.g., vehicle location, speed, and other operating conditions) with Google and its service providers. See Google privacy policy for details regarding Google's use and handling of data uploaded by Android Auto. Use of Android Auto is at user's own risk, and is subject to agreement to the Android Auto terms of use, which are presented to the user when the Android Auto application is downloaded to the user's Android phone. Android Auto vehicle integration is provided "as is," and Honda cannot guarantee Android Auto operability or functionality now or in the future due to, among other conditions, changes in Android Auto software/Android operating system, service interruptions, or incompatibility or obsolescence of vehicle-integrated hardware or software. See dealer for details. Only use Android Auto when conditions allow you to do so safely. See your Owner's Manual at owners.honda.com (U.S.) or myhonda.ca (Canada) for further license and warranty terms.

Models with Display Audio



The diagram shows a car's display audio interface with several callouts explaining functions:

- Source:** Select the FM or AM icon.
- Scan:** Scan for each station with a strong signal.
- Tune:** Change the station.
- Presets:** Select and hold a preset number to store the current station. Select a preset number to select a previously stored station.
- Open/close:** Display or hide the station list or preset list.
- Seek:** Search for the next or previous station with a strong signal.

The interface itself displays the following information:

- MAP button at the top left.
- HOME, MENU, BACK, and VOL/AUDIO buttons on the left side.
- Source: FM icon.
- Country: Country
- Frequency: 93.5.1
- Station ID: AAAA-HD1
- Artist: Artist A
- Song: Song A
- Time: 12:34
- Buttons: Scan, Tune, Seek
- Presets: 11.1, 12.1, 13.1, 14.1, 15.1, 16.1, 17.1

iPod®

Play and operate an iPod®*14 through the vehicle's audio system. Connect your device to the USB port (see USB Port).

Models with Display Audio



■ Searching for Music

*14 - iPod and iPhone are trademarks of Apple, Inc.

Model with Display Audio

Use the touchscreen to search for tracks stored on the iPod.

1. Use the Display Audio to search for tracks stored on the iPod.
2. From the audio screen, press MENU.
3. Select Music Search.
4. Select a search option.
5. Select the track you want to play.



Pandora®*13

Play and operate Pandora from your phone through the vehicle's audio system. Visit automobiles.honda.com/handsfreelink/ to check phone compatibility. Standard data rates apply. **Available in the U.S. only.**

Connect your phone when the vehicle is stopped.

For iPhone:

- Connect via *Bluetooth* HandsFreeLink (see Pairing a Phone) or USB port (see USB Port).
- A pop-up may appear on your phone requesting you to allow access for Pandora to be launched.

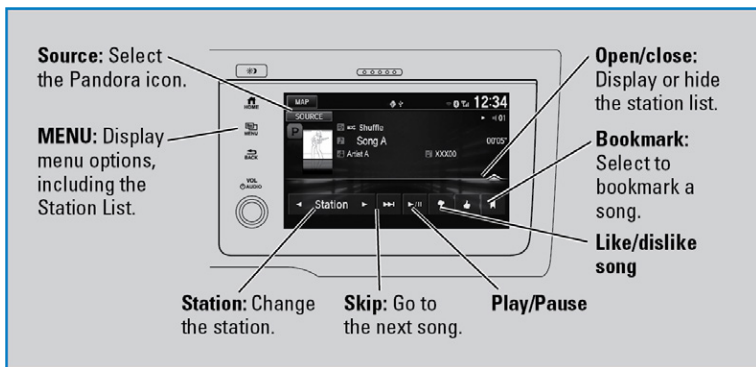
*13 - US models only, if equipped

AUDIO AND CONNECTIVITY

- If you cannot operate Pandora through the audio system, it may be streaming through *Bluetooth* Audio. Make sure Pandora is selected on the audio system.
- If Pandora still does not operate, try rebooting the phone and reconnecting the cable if necessary.

For other compatible smartphones:

- Connect via *Bluetooth* HandsFreeLink (see Pairing a Phone).

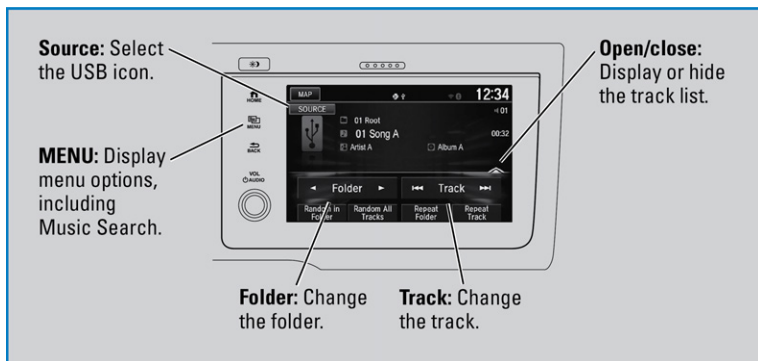


USB Flash Drive

Play and operate a USB flash drive through the vehicle's audio system. Connect your device (see USB Port).

Applicable laws may prohibit the operation of handheld electronic devices while operating a vehicle. Launch streaming audio on your phone only when it is safe to do so.

Models with Display Audio

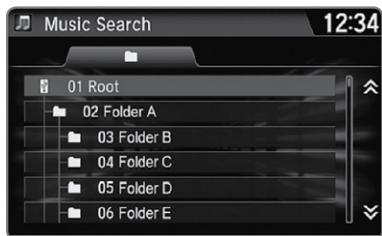


■ Searching for Music - USB Flash Drive

Models with Display Audio

Use the touchscreen to search for tracks.

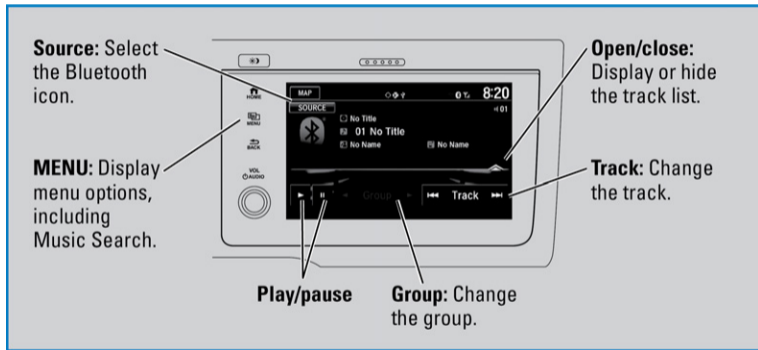
1. From the audio screen, press MENU.
2. Select Music Search.
3. Select a folder.
4. Select the track you want to play.

**Bluetooth® Audio**

Play streaming or stored audio from your compatible phone when it is paired to *Bluetooth®* HandsFreeLink® (see Pairing a Phone). Visit handsfreelink.com (US) or handsfreelink.ca (Canada) to check phone compatibility. Standard data rates apply with your phone service provider.

AUDIO AND CONNECTIVITY

Models with Display Audio



■ Searching for Music

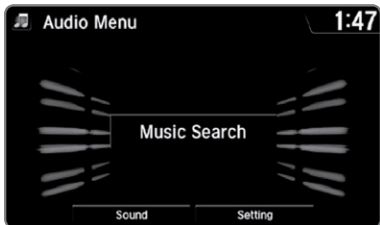
Models with Display Audio

Use the touchscreen to search for tracks stored on the device.

1. From the audio screen, press MENU.
2. Select Music Search.
3. Select a search category.
4. Select the track you want to play.

Note:

- Make sure the volume on your phone is properly adjusted.
- You may need to enable additional settings on your phone for playback.
- The resume/pause function and remote audio controls are not supported on all phones.



Compact Disc (CD)*1

The audio system supports audio CDs, CD-Rs, and CD RWs in MP3, WMA, or AAC formats. Insert a CD to begin automatic playback.

NOTICE

Do not use CDs with adhesive labels or insert a damaged CD. Inserting these types of CDs may cause them to get stuck inside or damage the audio unit.

**1 - If equipped*

BLUETOOTH® HANDSFREELINK®

Learn how to operate the vehicle's hands-free calling system.

Basic HFL Operation

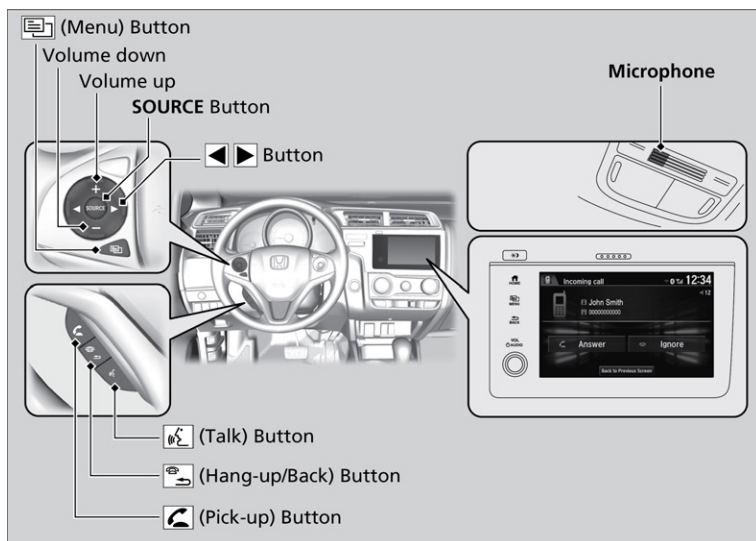
Make and receive phone calls using the vehicle's audio system, without handling your phone. Visit [automobiles.honda.com/handsfreelink/\(U.S.\)](http://automobiles.honda.com/handsfreelink/(U.S.)) or phone (888) 528-7876 (Canada) to check phone compatibility.

To reduce the potential for driver distraction, certain manual functions may be inoperable or grayed out while the vehicle is moving. Voice commands are always available.

■ HFL Displays and Controls

Use the controls to enter information and make selections.

Models with Display Audio



■ Talk Button Tips

When using the Talk button, wait for the beep before saying a command. The system recognizes only the commands listed in the Voice Command Index.

- Aim the vents away from the ceiling and close the windows, as noise coming from them may interfere with the microphone.
- Press and release the talk button when you want to call a number using a stored voice tag. Speak clearly and naturally after a beep.
- If the microphone picks up voices other than yours, the command may be misinterpreted.
- To change the volume level, use the audio system's volume knob or the remote audio controls*¹ on the steering wheel.

Pairing a Phone

To use hands-free phone and streaming audio functions, you must first pair your phone to the system. This can only be done when the vehicle is stopped. Use the selector knob or the Display Audio to make and enter selections

*1 - If equipped
Applicable laws may prohibit the operation of handheld electronic devices while operating a vehicle.

■ **Pairing the First Phone**

Models with Display Audio

1. From the Home screen, select Settings.
2. Select Phone.
3. Select Bluetooth Device List.
4. Select Add Bluetooth Device.
5. Make sure your phone is in discovery mode. Select Continue.
6. The system searches for your phone. Select your phone when it appears on the list.

If your phone does not appear:

Select Phone Not Found and search for HandsFreeLink from your phone. Connect to HFL.

7. The system gives you a pairing code. Compare it to the code that appears on your phone. Connect to HFL from your phone.



- The system asks if you want to enable options: HondaLink Assist: Select On to enable emergency collision notification (see HondaLink Assist).

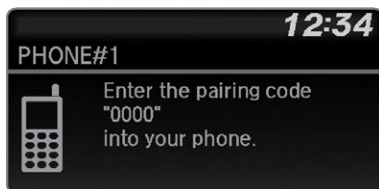
Phone Synchronization. Select On to automatically import contacts and call history from your phone.

- Press BACK to exit the menu.



■ Pairing an Additional Phone

- Press the Phone button to go to the Phone screen. If a prompt appears asking to connect to a phone, select No.
- Select Phone Setup.
- Select Bluetooth Setup.
- Select Add New Device.
- Select Add New.
- Make sure your phone is in discovery mode. Select OK.
- The system searches for your phone. Select it when it appears on the list.
- If your phone does not appear:* Select Phone Not Found?, and search for HandsFreeLink from your phone. Connect to HFL.
- The system gives you a pairing code. Enter it on your phone when prompted.



Making a Call

You can make calls using several methods.

■ Dialing a Number

Applicable laws may prohibit the operation of handheld electronic devices while operating a vehicle.

Models with Display Audio System

Enter a 10-digit phone number to call.

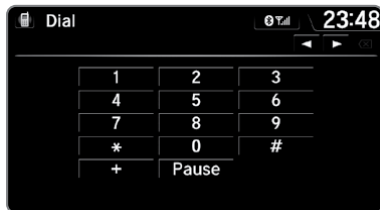
Using voice commands

1. Press the Talk button before you say each command.
2. Say "Dial by number."
3. Say the phone number: For example, "3-1-0-5-5-5-1-2-3-4"
4. The system begins to dial.

Using the touchscreen

Manual operation is limited while the vehicle is moving. Voice commands are always available.

1. From the Home screen, select Phone.
2. Select Menu.
3. Select Dial.
4. Enter the phone number. Select the green phone icon to call.



■ Using the Phonebook

Models with Display Audio

When your phone is paired, its entire phonebook can be automatically imported to the system. Phone synchronization must be turned on.

Using voice commands

1. Press the talk button before you say each command.
2. Say "*Dial by name.*"
3. Say the phonebook name and phone type. For example, "*John Smith mobile.*"

Using the touchscreen

Manual operation is limited while the vehicle is moving.

Voice commands are always available.

1. From the Home screen, select Phone.
2. Select MENU.
3. Select Phonebook.
4. Scroll through the list to find the name and number you want to call, and select it to call.

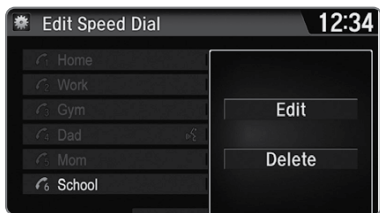


■ Storing Speed Dial Entries

Models with Display Audio

Store up to 20 numbers for quick dialing.

1. From the Home screen, select Phone.
2. Select MENU.
3. Select Speed Dial, then select New Entry.
4. Select an entry method.
5. If desired, you can create a voice tag for the number. Follow the prompts.



■ Using Speed Dial

Models with Display Audio

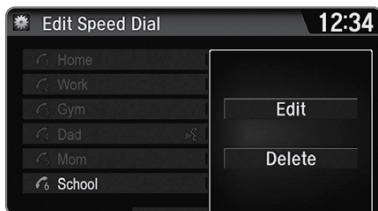
Make calls quickly using stored speed dial entries or call history numbers.

Using voice commands

1. Press the Talk button before you say each command.
2. Say "Dial by name."
3. Say the stored voice tag name. For example, "John Smith."

Using the touchscreen

1. From the Home screen, select Phone.
2. Select Speed Dial.
3. Scroll through the list to find the entry you want to call, and select it to call.



SMS Text Messaging and E-Mail*1

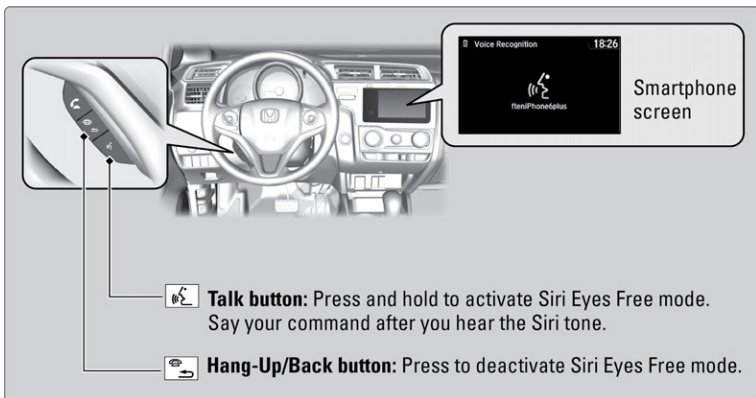
Certain phones can receive and send text messages and e-mails while paired and linked. Visit automobiles.honda.com/handsfreelink/ (U.S.) or www.handsfreelink.ca (Canada) to check phone compatibility. Standard message rates apply. This feature is limited while the vehicle is moving.

Siri™ Eyes Free

Models with Display Audio

Activate Siri through your vehicle when an iPhone is paired to the system. Visit automobiles.honda.com/handsfreelink/ (U.S.) or phone (888) 528-7876 (Canada) to check phone compatibility.

*1 - If equipped



Here are some examples of Siri Commands:

"Call John Smith"

"Read my new text message"

"Find a nearby sushi restaurant"

"Remind me to pick up dinner"

"Set up a meeting at 3 p.m."

"Play song XYZ"

Note:

- Any requests that include visual feedback from Siri on your phone are not displayed in the vehicle.
- Certain commands rely on the iPhone's features and existing apps.
- To hear turn-by-turn directions or songs through the vehicle, set the audio source to *Bluetooth* Audio.