

CHILTON[®]LIBRARY

Your Current Vehicle: 2015 Honda Fit

Rate this article: ★ ★ ★ ★ ★

High
Pu
Ins

Feedback

High
Instal

Removal

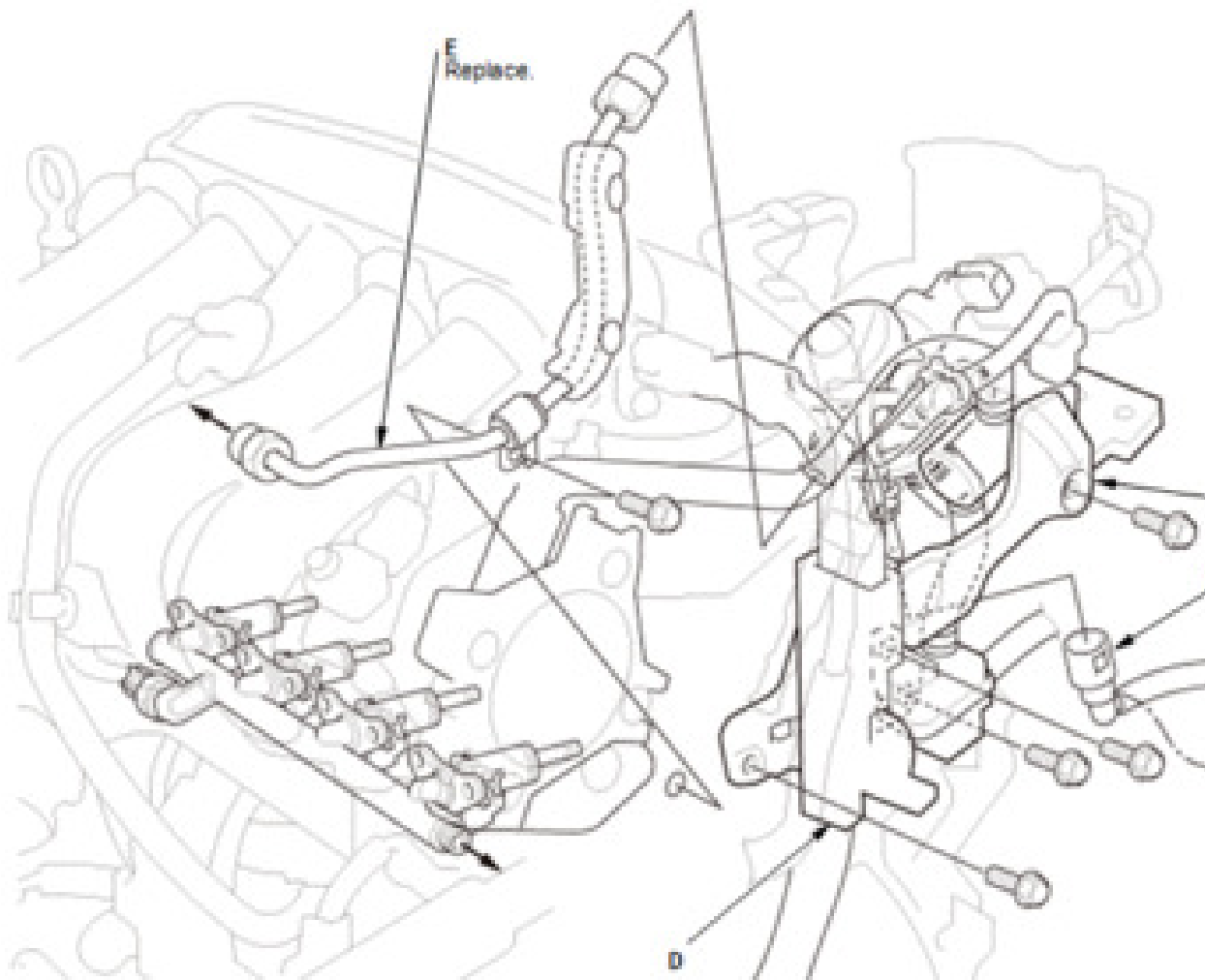
1. Fuel Pressure - Relieve
2. Camshaft Timing - Set
 1. Set the No. 1 piston at bottom dead center (BDC).
3. Throttle Body - Remove
4. High Pressure Fuel Pump Cover - Remove



Feedback

5. Fuel Joint Pipe - Remove

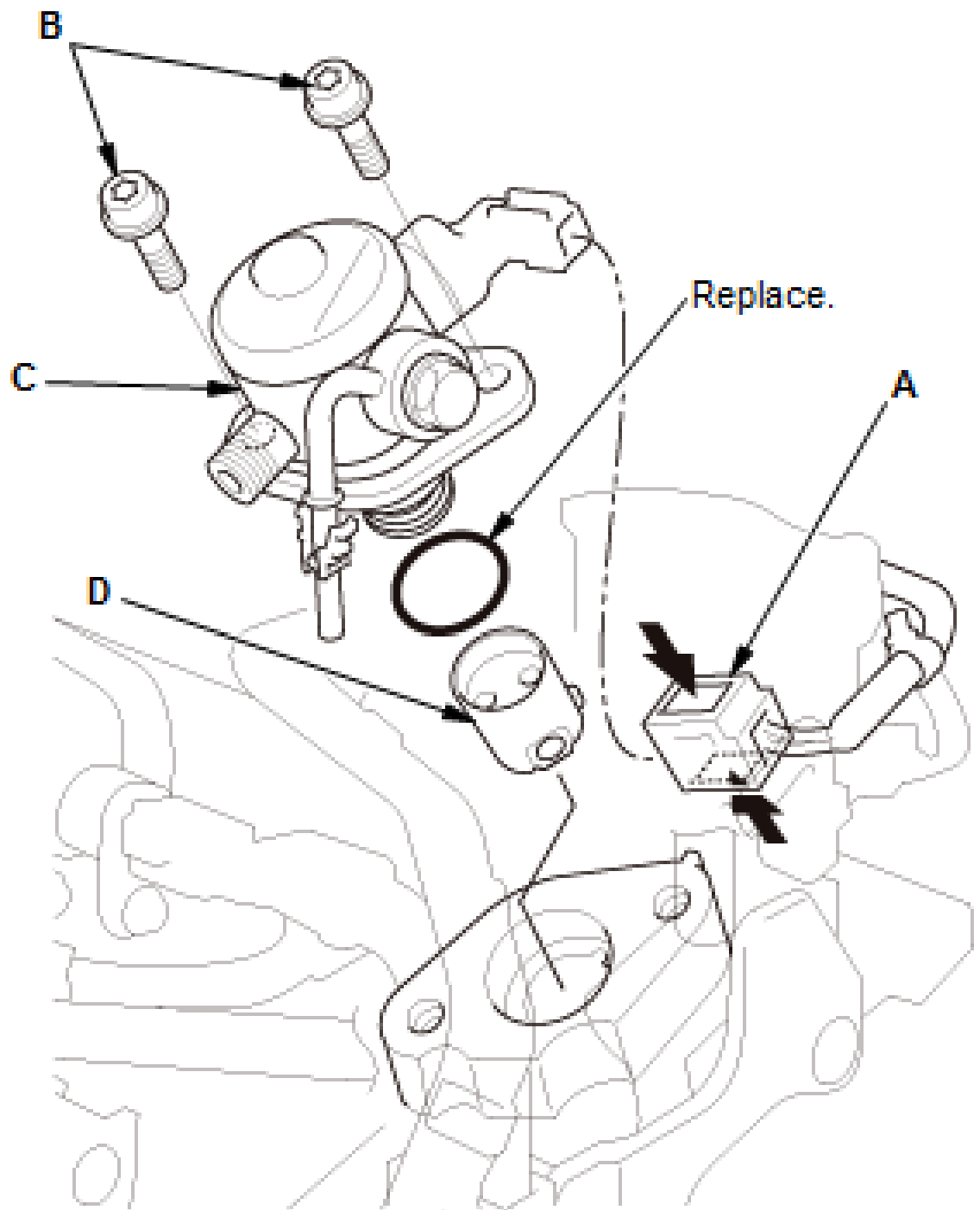
1. Remove the quick-connect fitting cover



2. Disconnect the quick-connect fitting (B)
Click to Enlarge
3. Remove the fuel joint pipe bracket (C).
4. Move the harness holder (D), and remove fuel joint pipe (E).

6. High Pressure Fuel Pump - Remove

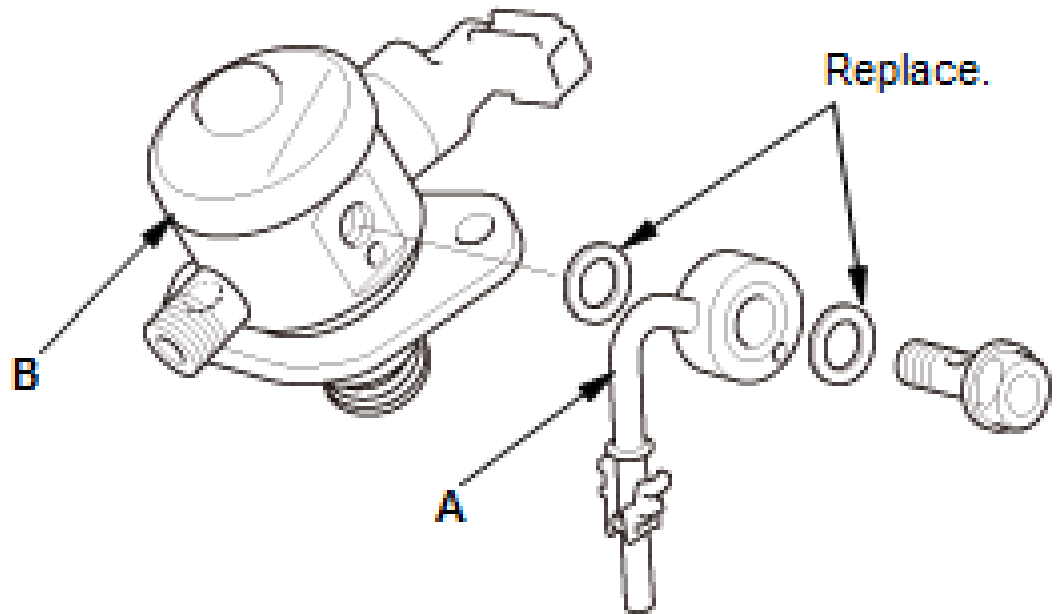
Feedback



1. Disconnect the connector (A).
2. Loosen the bolts (B) alternately, then re

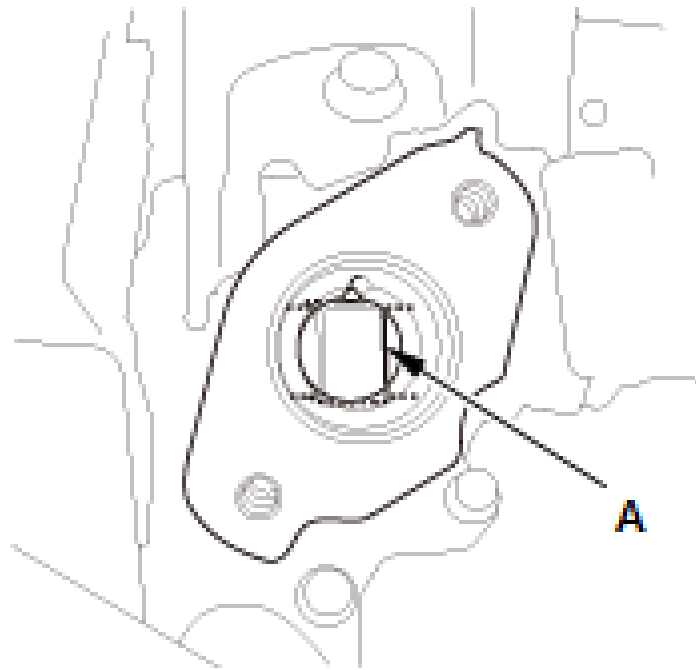
Feedback

the high pressure fuel pump (C) and the roller (D).

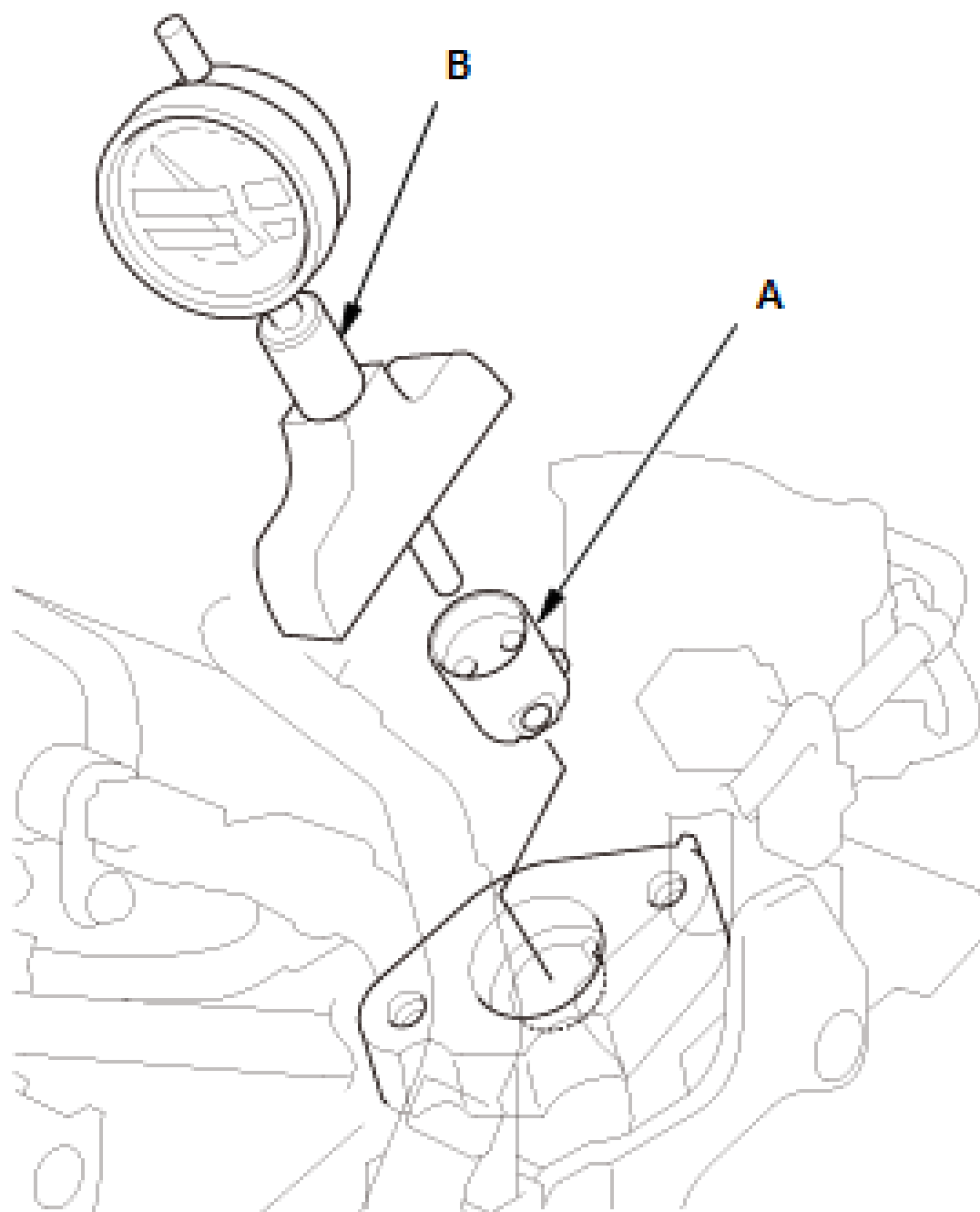


3. Remove the fuel feed pipe (A) from the pressure fuel pump (B).

7. High Pressure Fuel Pump Cam - Check



1. Rotate the crankshaft and check the high pressure fuel pump cam (A) for pits, scoring, and excessive wear. If needed, replace exhaust camshaft.



2. Set the No. 1 piston at bottom dead center (BDC).

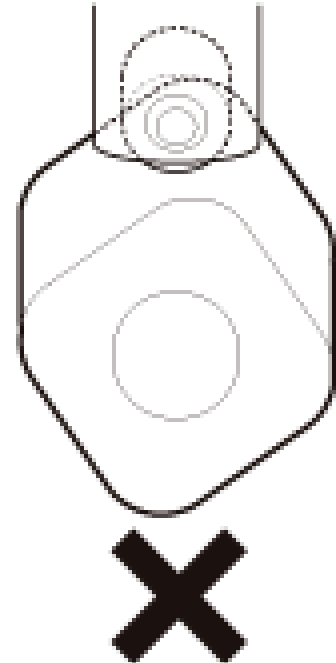
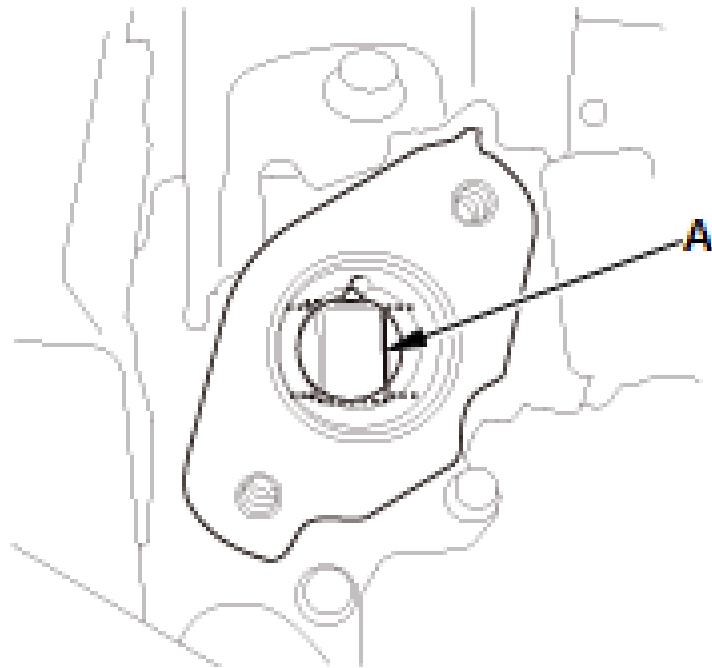
3. Install the roller (A) to the high pressure pump cam.
4. Set the gauge (B) on the roller and hold it then set the dial to zero.
5. Rotate the crankshaft to 720° and measure the four cam lobes height. If the cam lobes are excessively worn, replace the exhaust camshaft.

NOTE: The high pressure fuel pump camshaft has four cam lobes.

**Cam Lobe Height Standard (New): 0.015
(3.0 mm)**

Installation

1. Camshaft Timing - Set

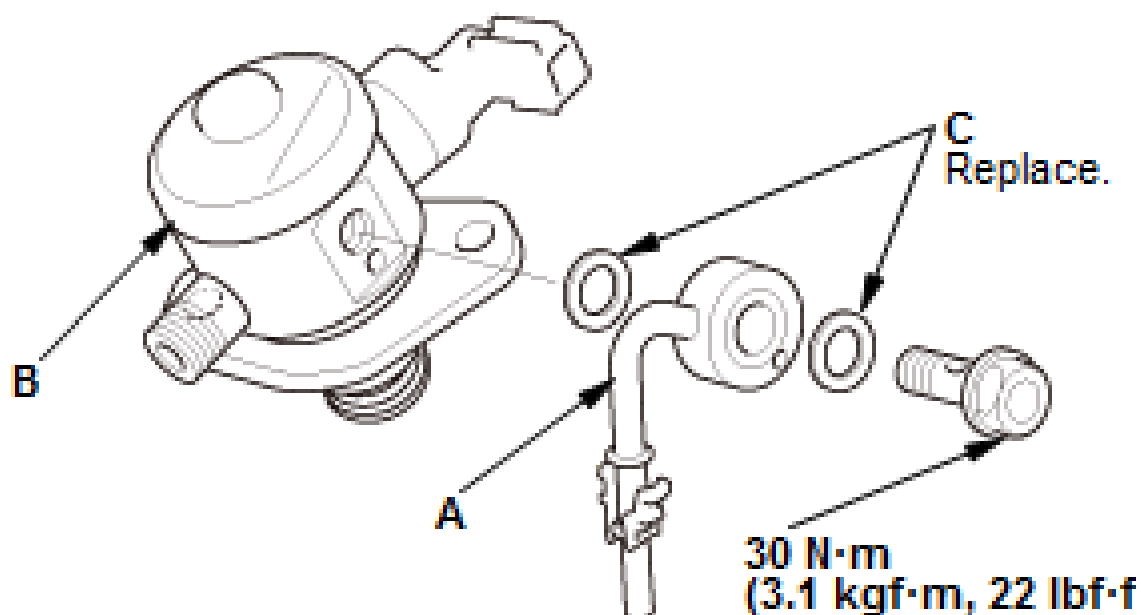


Feedback

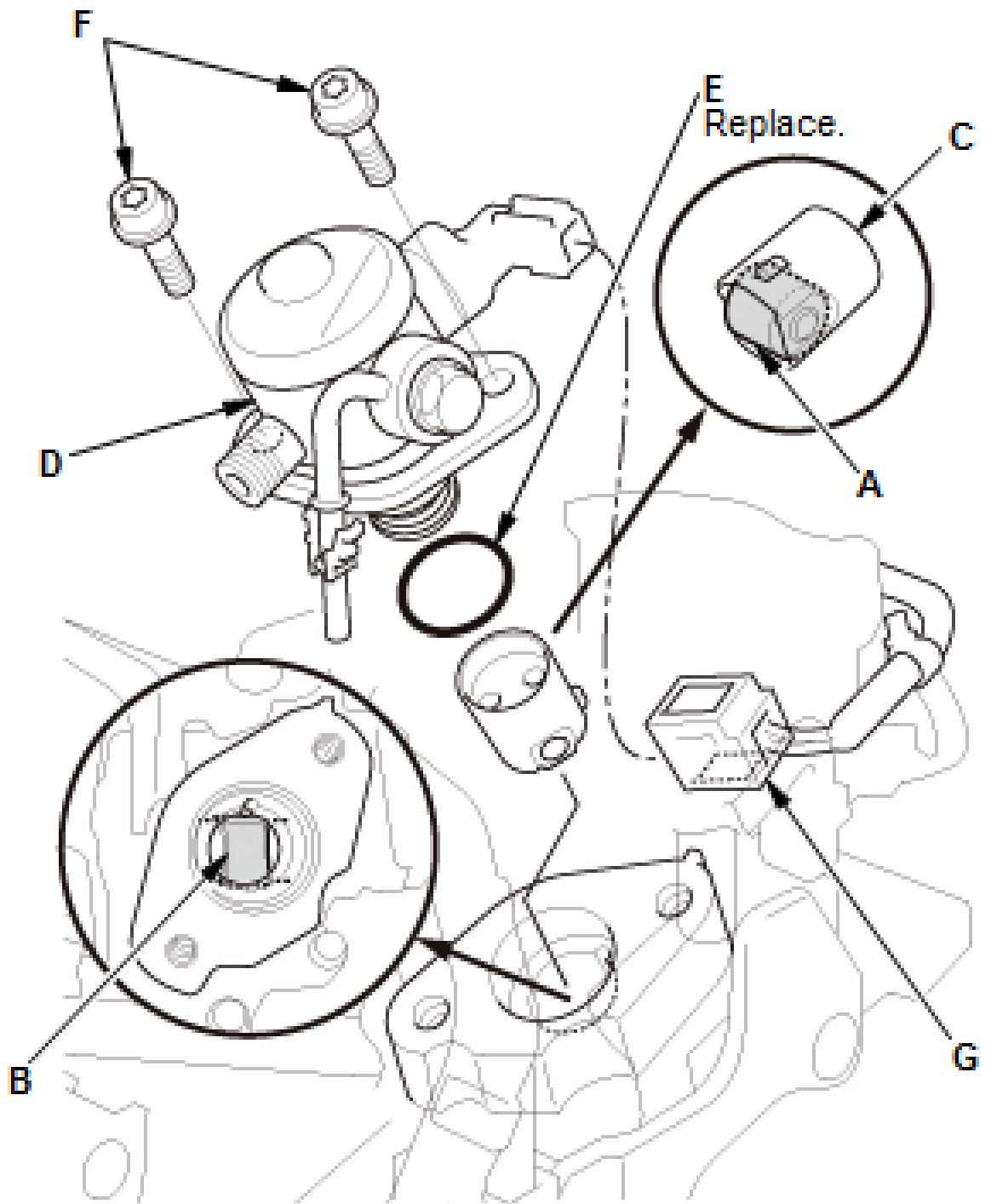
1. Set the No. 1 piston at bottom dead center (BDC).

2. Check the position of the cam (A) that controls the high pressure fuel pump as shown.

2. High Pressure Fuel Pump - Install



1. Install the fuel feed pipe (A) to the high pressure fuel pump (B) with new washer (C).



2. Coat the roller (A) and the cam (B) with engine oil.

Feedback

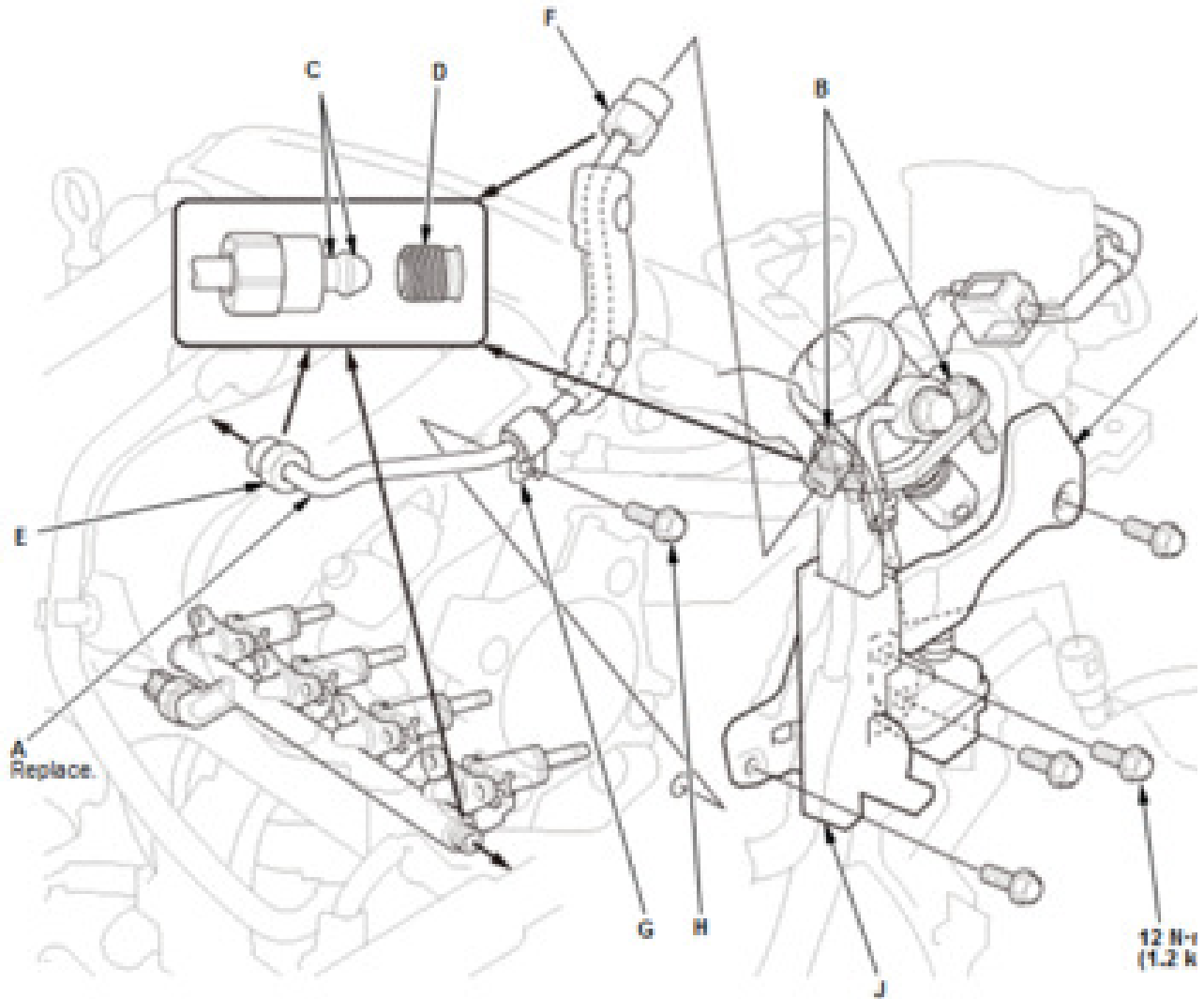
3. Install the roller (C) and the high pressure fuel pump (D) with a new O-ring (E) coated with clean engine oil. Install the bolt (F) loosely by hand in an alternate pattern.
4. Connect the connector (G).

3. Fuel Joint Pipe - Install

NOTE: Before you install the fuel joint pipe (A) loosen the high pressure fuel pump mounting bolts (B).

1. Lubricate the top of the new fuel joint pipe (C) and the threaded area (D) of the fuel joint pipe and the high pressure fuel pump with polyethylene glycol in a new fuel joint pipe kit.

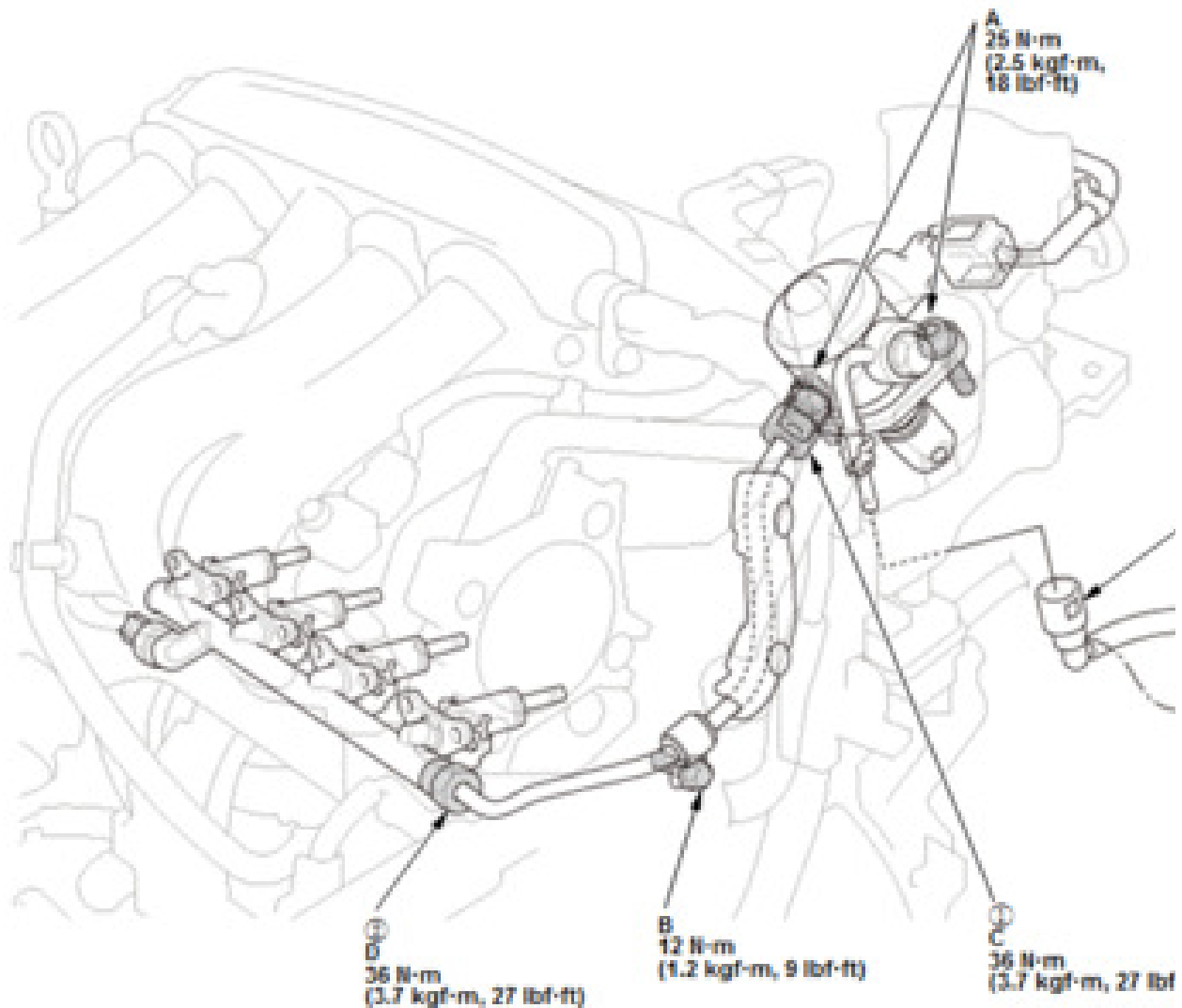
NOTE: Do not reuse the fuel joint pipe.



2. Tighten the fuel joint pipe nut (E) by hand until the end of the joint pipe is seated on the fuel rail.
3. Tighten the fuel joint pipe nut (F) by hand until the end of the joint pipe is seated on the high pressure fuel pump.

Feedback

4. Set the fuel joint pipe bracket (G) to the cylinder head, and loosely install the bracket (H).
5. Install the fuel joint pipe bracket (I), and harness holder (J).
6. Tighten the high pressure fuel pump mounting bolts (A) loosely in an alternating pattern until the high pressure fuel pump and the cylinder head sitting surfaces are contacted.



7. Tighten the high pressure fuel pump mounting bolts to the specified torque.
8. Tighten the fuel joint pipe bracket mounting bolt (B) to the specified torque.
9. Tighten the high pressure fuel pump side

Feedback

the fuel joint pipe nut (C) and the fuel r
side of the fuel joint pipe nut (D) to the
specified torque in the numbered sequ
shown.

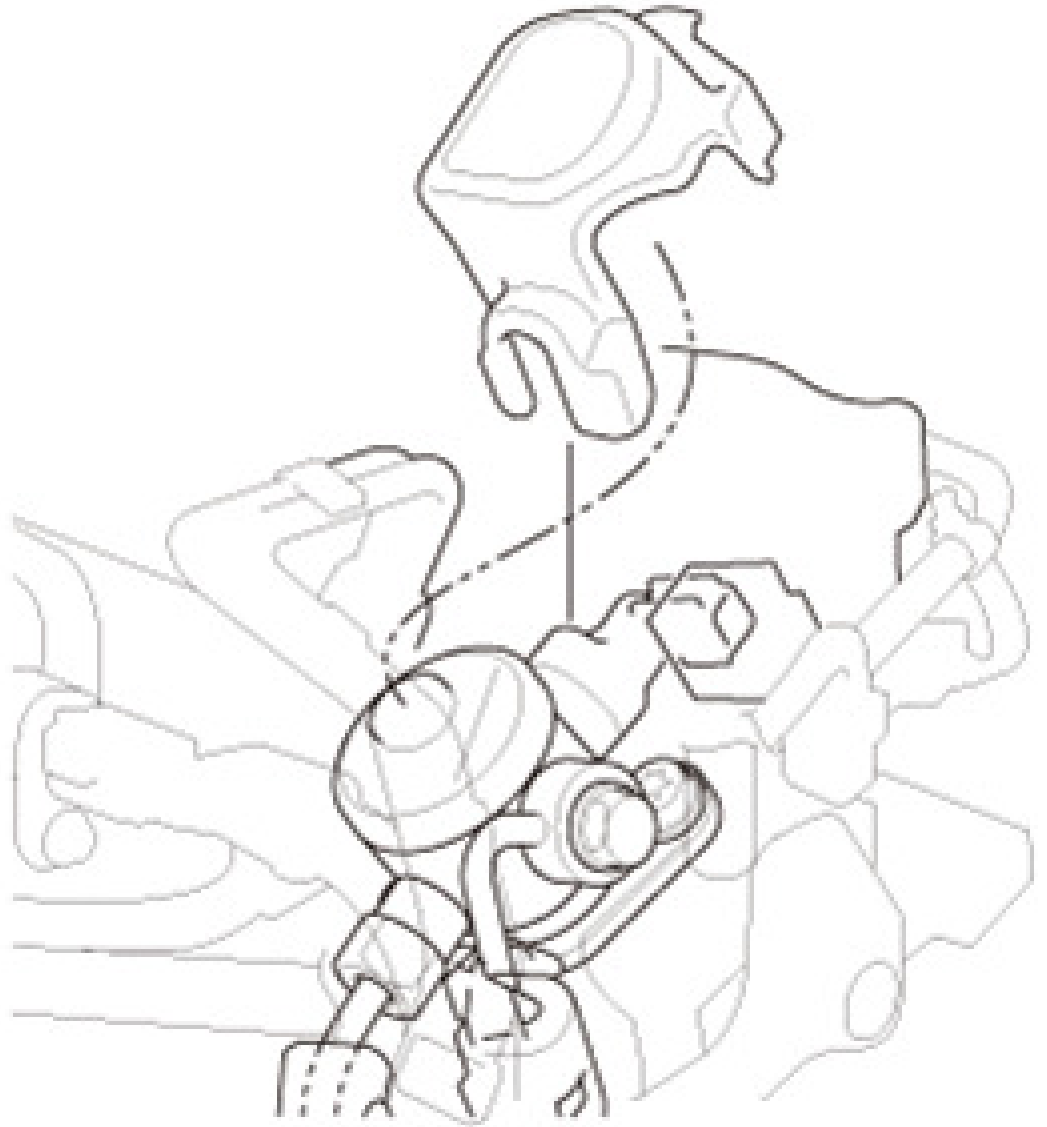
NOTE: A crowfoot-type special tool incre
the torque applied by the torque wrench
Refer to Torque Specifications for detail
how to recalculate the torque wrench s

10. Connect the quick-connect fitting (E) and
install the quick-connect fitting cover (F)

4. Fuel Leak (Low Pressure Side) - Check

1. Turn the vehicle to the ON mode, but do not
start the engine. After the fuel pump runs
about 2 seconds, the fuel line will be
pressurized. Repeat this two or three times
then check for fuel leakage.

5. Fuel Leak (High Pressure Side) - Check
6. High Pressure Fuel Pump Cover - Install



Feedback

7. Throttle Body - Install

Copyright ©2018 by Chilton, an imprint of
Cengage Learning

[\(/lh/Home/Index/mwell8sJBx42dOff__uFBu](#)

[Terms and Conditions \(http://www.cengage](#)

[Privacy Statement \(http://www.cengage.com](#)

[Contact Us \(http://www.cengage.com/cont](#)

Feedback

