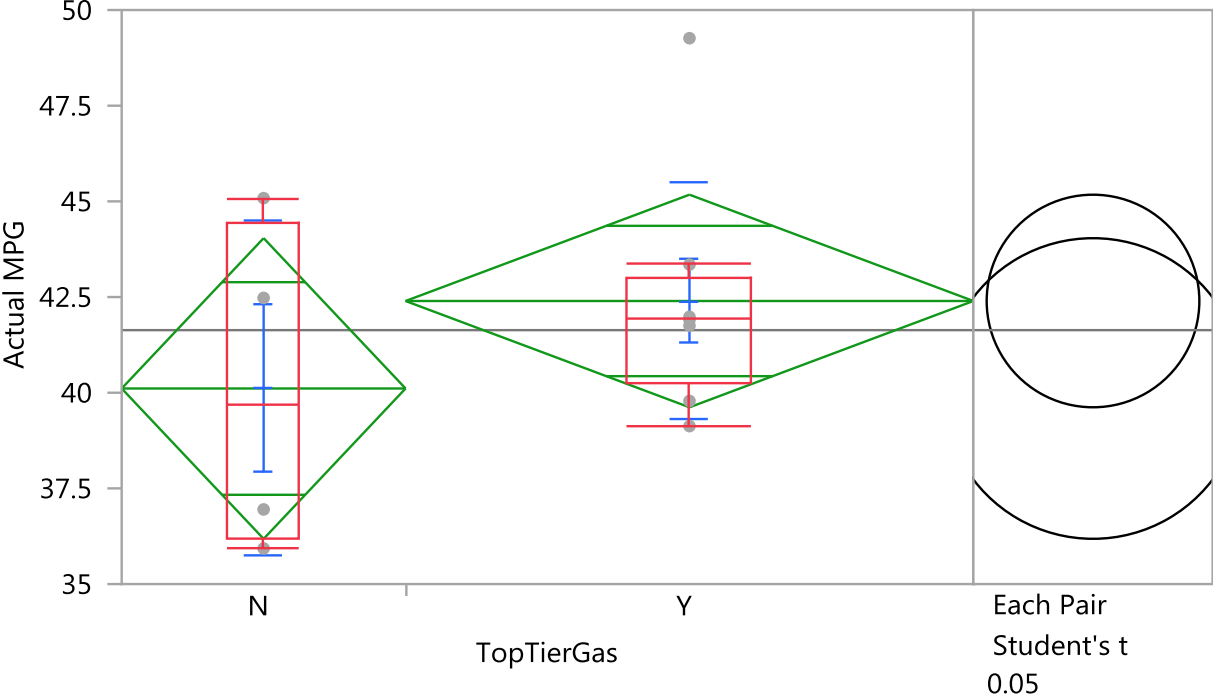


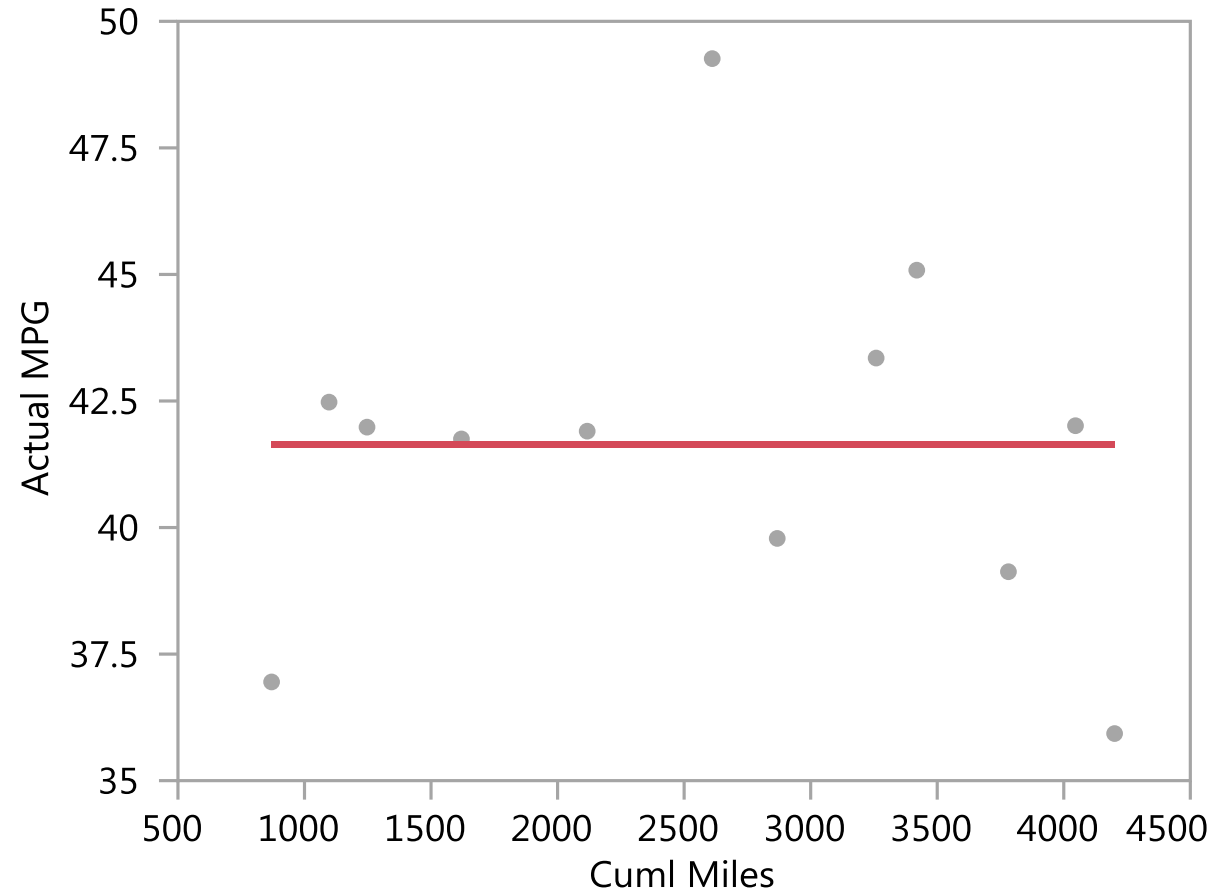
Oneway Analysis of Actual MPG By TopTierGas

No statistical difference in mpg using TopTier



Bivariate Fit of Actual MPG By Cuml Miles

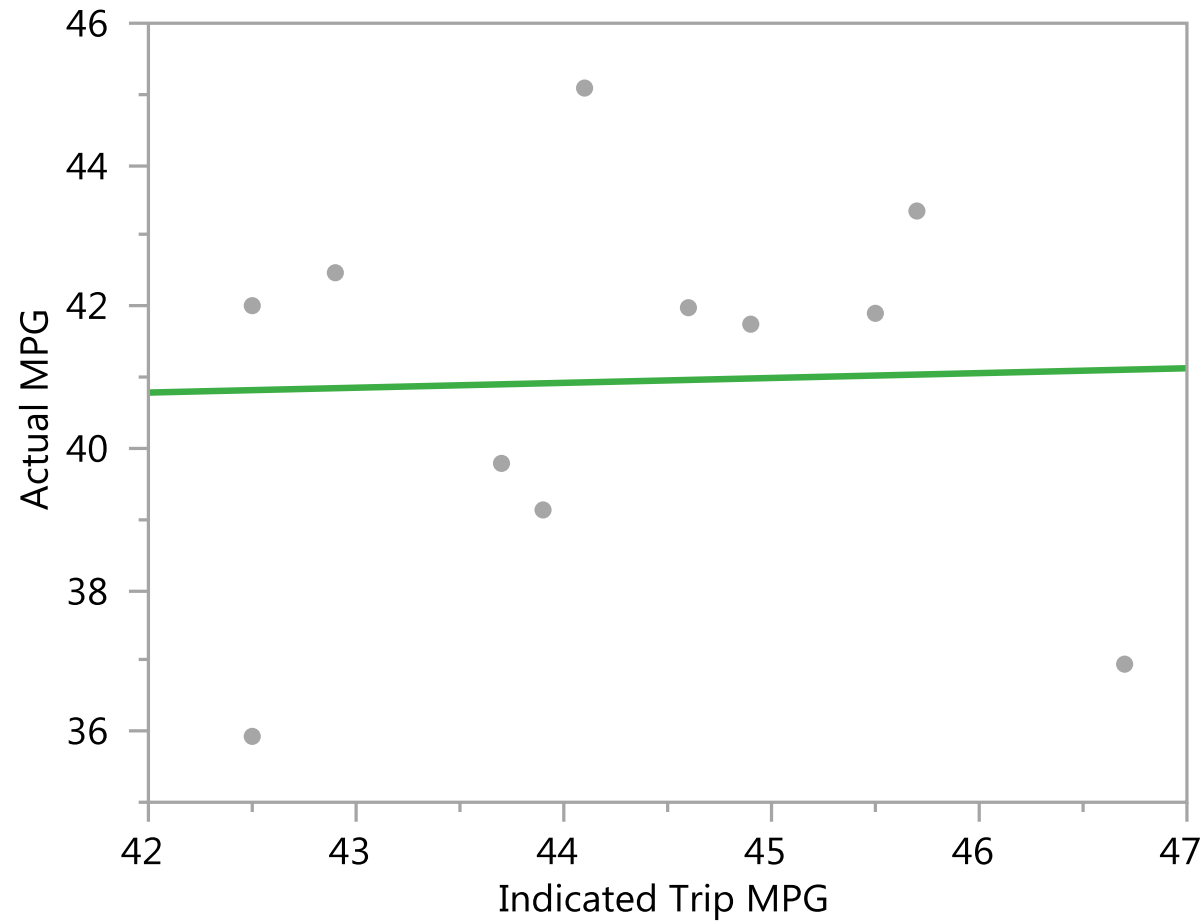
No additional improvement in mpg during break-in



— Fit Mean

Bivariate Fit of Actual MPG By Indicated Trip MPG

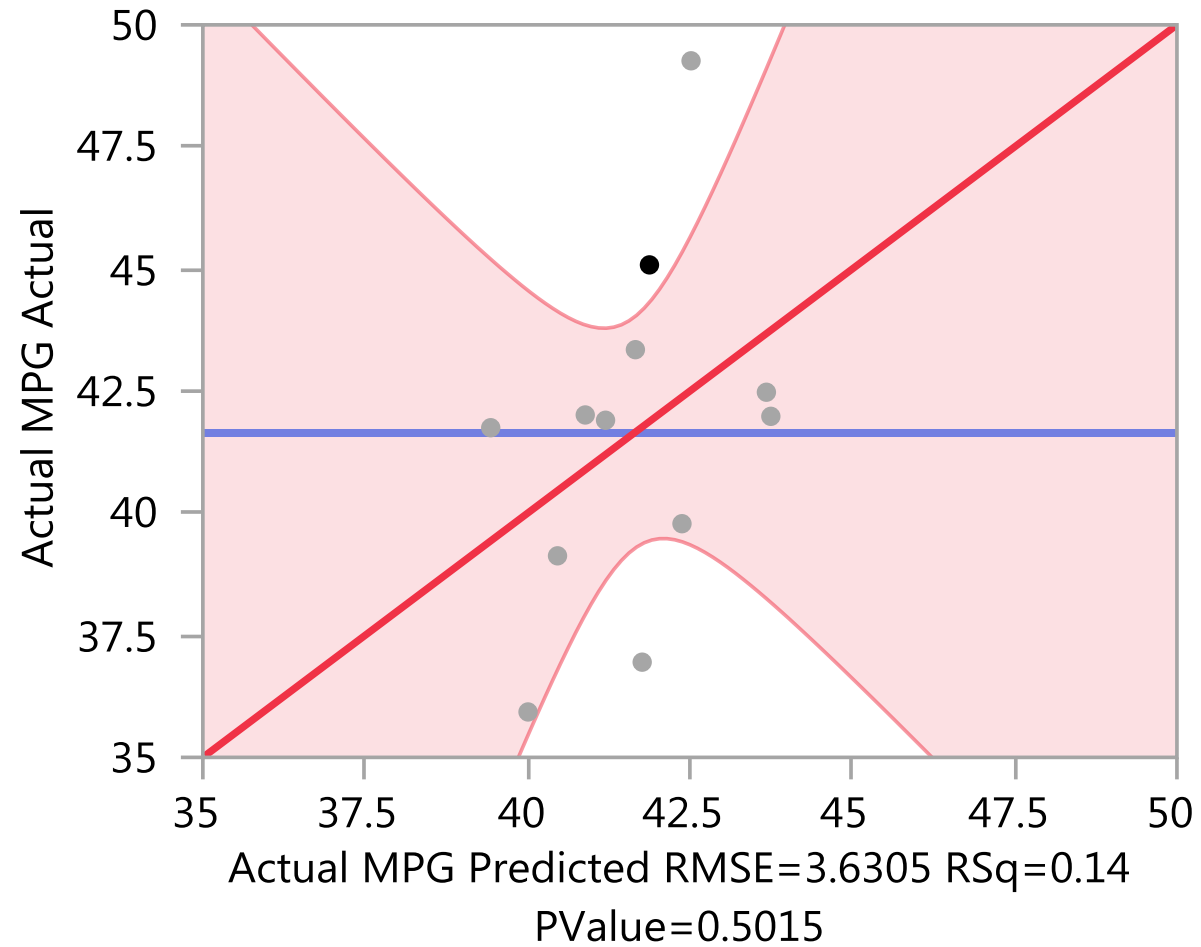
Actual mpg (gas used in miles driven tracks with indicated trip mpg; however indicated mpg is off by +4-6% over actual



— Linear Fit

Actual by Predicted Plot

%City Driving and Temperature drive mpg for a given driving style

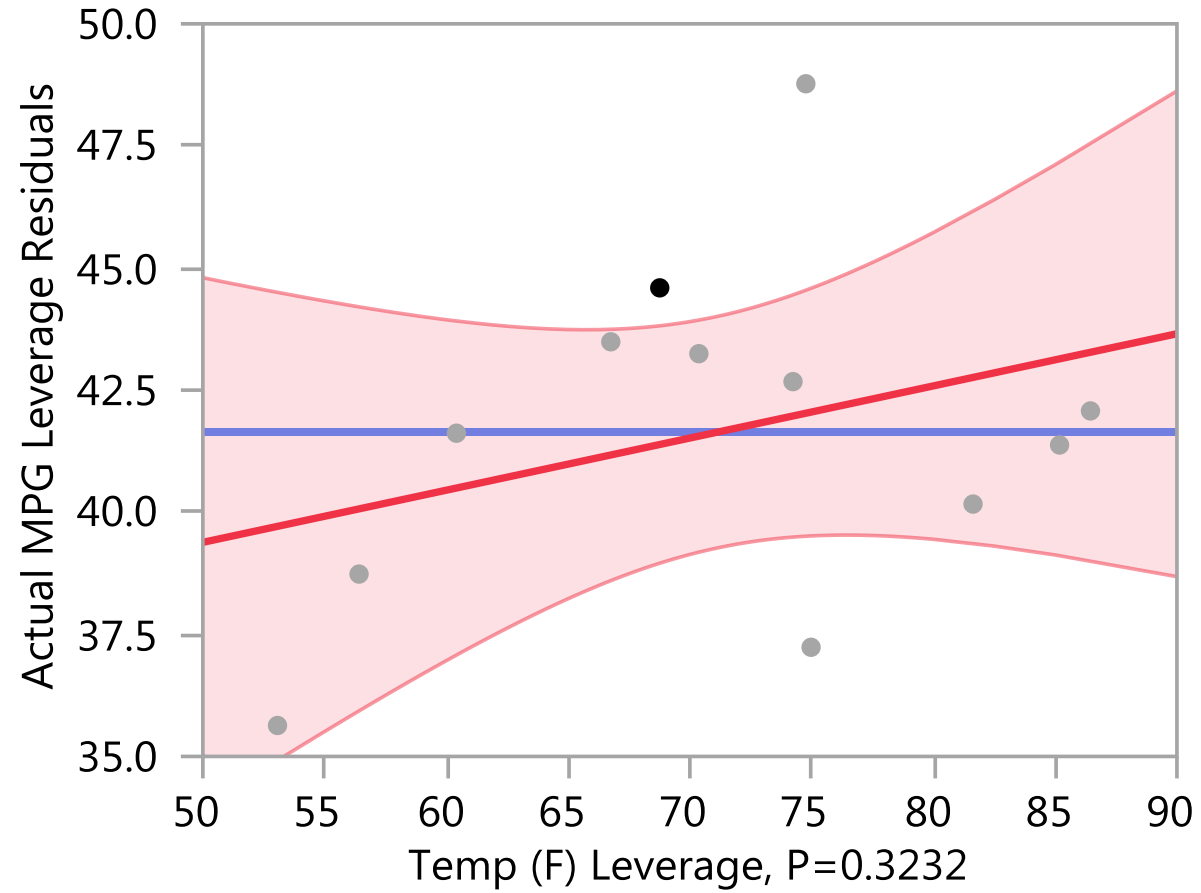


Response Actual MPG > Whole Model

Parameter Estimates

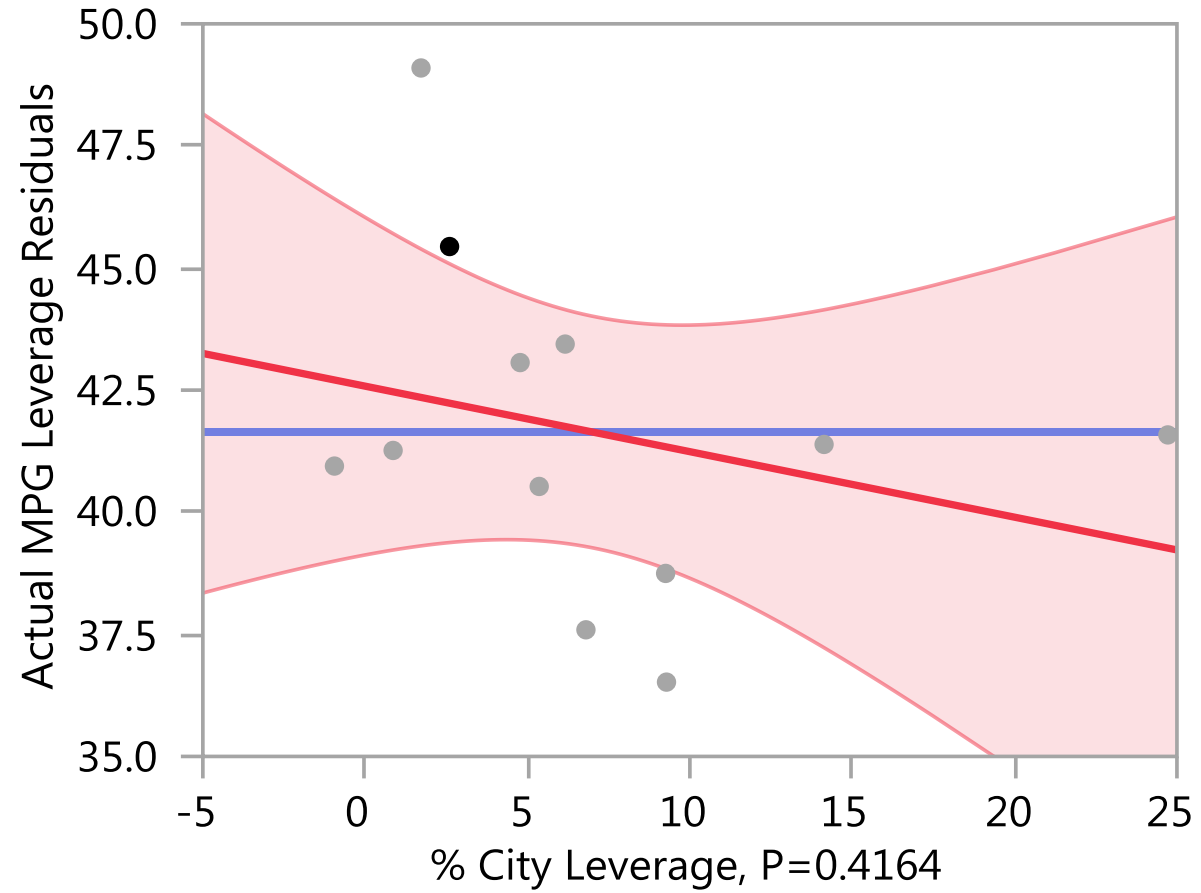
Term	Estimate	Std Error	t Ratio	Prob> t
Intercept	34.991808	7.170775	4.88	0.0009*
Temp (F)	0.1067677	0.10216	1.05	0.3232
% City	-0.134127	0.157463	-0.85	0.4164

Leverage Plot



Response Actual MPG > Temp (F)

Leverage Plot



Response Actual MPG > % City